

AIRIS EXILIS

The power to control light





Offices in 17 countries and representation in more than 40 countries.



ISO Certification

OSHAS Certification

AIRIS sales leader for the third consecutive year

3% less than your Best offer

Satisfaction guarantee



AIRIS has the ISO 9001 Certificate and the ISO 14001 certificate, contributing to the improvement of our services, commercial relations and continuous improvement of the organization's environmental performance.

AIRIS has the OHSAS 18001 certification that guarantees the best working conditions.

Leaders in sales of LED lighting for the third consecutive year, according to data published by nº 19 (September - October 2014) of the energy magazine Almarket, number one in generation of information content economic and sectoral in Spain. (see page 3).

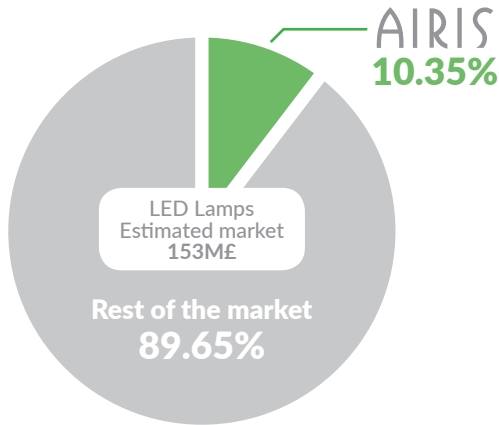
For operations of cash payment to final customer of more than € 50,000, if you get a better offer on product, send us the offer and samples of the product offered and if it is equivalent to ours we will improve your offer by 3% (valid during 2017-2018).

If we do not fulfill the expected savings or the amount of light you have now, return the product and we will refund your money (up to 45 days after delivering the product).

Marketing of lighting systems with LED technology in the national territory. Manufacture of luminaries in the national territory.

Marketing of lighting systems with LED technology in the national territory. Manufacture of luminaries in the national territory.

Sales leader in LED lighting



LED Lamps sales
in the market of 2015



SOLVENCY'S COMPANY.

- More than 20 years of technology experience.
- Stock holding = 2 million Pounds.
- Research and development laboratory.
- Continued product development.

COMPANY'S ACHIEVEMENT.

- More than 2000 installations complete.
- More than 35 Million £ saved each year in energy.
- A reduction of more than 99,000t CO2 emitted.

BEST TECHNOLOGICAL PRODUCT.

- **An average of 300 lm / W in the complete solution**
- Point-to-point luminaire control
- Light and intelligent presence sensor in luminaires



LED advantages

TECHNOLOGICAL ADVANTAGES OF LED OVER TRADITIONAL LIGHTING

ENERGY SAVINGS		60% consumption reduction
		Between 60-90% less heat emitted
		Screen does not darken or yellow
		Quick response, on-off
		50,000 hours Useful life
TO HEALTH		Better vision No flicker
		Better light quality No infrared No ultraviolet
		CO ₂ Reduction
FOR THE ENVIRONMENT		RoHS
		No polluting gases Free of lead and mercury

Benefits SmartLED AIRIS EXILIS (see page 10)

- 60% extra savings on any luminaire**
- Durability 300% more than any LED luminaire**
- High Technology, guarantee and security in its installation**

SmartLED AIRIS EXILIS

Intelligent lighting

- MOTION sensor** (Icon: person with motion lines)
- COMMUNICATIONS system** (Icon: antenna)
- INTELLIGENCE to process data** (Icon: brain)
- MAXIMUM efficiency (130 lm / W)** (Icon: upward arrow)
- DAYLIGHT Sensor** (Icon: sun)

Even if you were "given" a conventional LED luminaire, the intelligent AIRIS illumination with EXILIS source and sensor would be more economical!

Savings models for end customer

FINANCIAL PROPOSALS AIRIS (SIMULATED DATA)

Returns and benefits	BUSINESS MODELS			Sharing Savings 70/30 – 80/20	Energy 7 measures 5% savings
	Cash	Funded	Rental		
	Immediate investment	5 year AIRIS financing	Rent 5 years or Financing 10 years		
Amount operation	129.500	152.240	129.500	0	
Total savings 1 st year Payment by LED 1 st year	41.374 -129.500	41.374 -30.448	41.374 -25.900	60.000 -42.000	
Payment installation	-10.000	-10.000	-10.000	0	
Generation of box end year 1°	-98.125	927	5.475	18.000	20.000
Total savings 2 nd year Payment by LED 2 nd year	43.443 0	43.443 -30.448	43.443 -25.900	63.000 -44.100	
Generation of cash end year 2° accumulated	-54.682	13.922	23.018	36.900	41.000
Total savings 3 rd year Payment for LED 3 rd year	45.512 0	45.512 -30.448	45.512 -25.900	66.150 -46.305	
Generation of cash end year 3° accumulated	9.170	28.986	42.630	56.745	63.050
Total savings 4 th year Payment for LED 4 th year	47.581 0	47.581 -30.448	47.581 -25.900	69.457 -48.620	
Generation of cash end year 4° accumulated	38.411	46.119	64.310	77.582	86.202
Ahorro total 5 ^o año Pago por LED 5 ^o año	49.649 0	49.649 -30.448	49.649 -25.900	72.930 -51.051	
Generation of cash end year 5° accumulated	88.060	65.320	88.060	99.461	110.512
Return / Investment	37 Months	0 Months	0 Months	0 Months	
Rate of return on investment (IRR)	22%	∞	∞	∞	

Benefits sharing savings - 2 measures

MEASURE 1 | Daily consumption monitoring

MEASURE 2 | Installation LEDs with light detection and presence and total guarantee



AIRIS Energy benefits - 7 measures



Consumption monitoring and supervision

Expected savings:

0 - 5% because we detect hidden consumption



Remote management of the main loads

Expected savings:

3% of the total consumption without Lighting



Installation LEDs 120 lm / W with integrated presence sensor

Expected savings:

70% of consumption in lighting



Domotic climate with temperature control

Expected savings:

15% of the climate consumption



Supervision and correction of reactive energy

Expected savings:

It depends on installation and hours of use



Balancing and stress reduction

Expected savings:

3% of the total consumption without lighting



Reduced power equipment contracted

Expected savings:

10% of global power

NH HOTEL GROUP



AIRIS Energy benefits



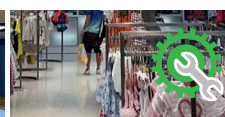
We install intelligent LED technology improving the lighting of your business



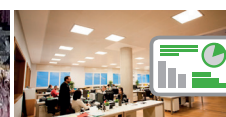
Pay less KWs on your electric bill



Better image of your facilities



Maintenance of installed luminaires



Smart accountant Keep control of your consumption, do not leave your money in the hands of third parties



100% de ahorro en gastos de reposición



Supermarkets

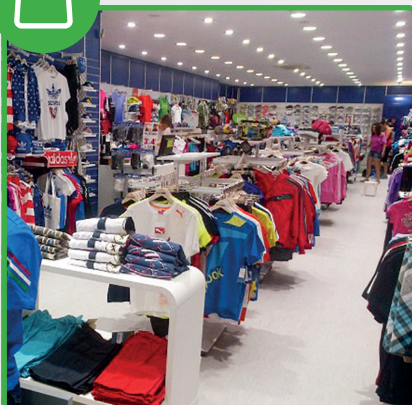


Norm: UNE 12464
Work places lightings

	E_m Lux ⁽¹⁾	UGR _L ⁽²⁾	U_0 ⁽⁵⁾	IRC ⁽³⁾ (R _s)
Hallways	300 ground	22	0,40	80
Cashiers	500	19	0,60	80



Retailers / Stores



Norm: UNE 12464
Work places lightings

	E_m Lux ⁽¹⁾	UGR _L ⁽²⁾	U_0 ⁽⁵⁾	IRC ⁽³⁾ (R _s)
Sales area	300 ground	22	0,40	80
Cashiers	500	19	0,60	80



Hotels / Restaurants



Norm: UNE 12464
Work places lightings

	E_m Lux ⁽¹⁾	UGR _L ⁽²⁾	U_0 ⁽⁵⁾	IRC ⁽³⁾ (R _s)
Reception, Buffet.	330	22	0,40	80
Kitchens	500	19	0,60	80
Conference hall	500	22	0,60	80
Hallways	100	25	0,40	80



¹ E_m Lux: The medium level of light measured in luxes in your work or ground according to the area to illuminate.
² UGR_L: Unified glare index limit, maximum allowed.
³ IRC: Chromatic reproduction index required.
⁵ U_0 : Global uniformity (U_0) = minimum luminance (L_{min}) average luminance (L_m).



Residence / Hospitals

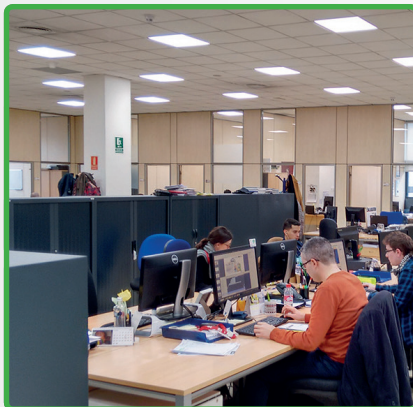
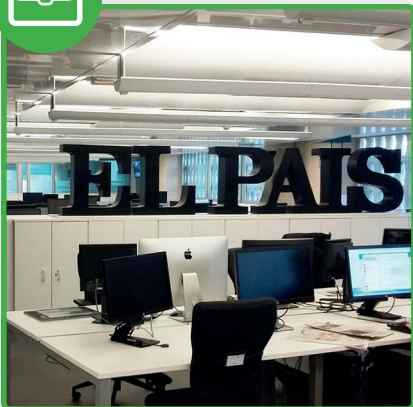


Norm: UNE 12464
Work places lightings

	E_m Lux ⁽¹⁾	UGR _L ⁽²⁾	U_o ⁽⁵⁾	IRC ⁽³⁾ (R _a)
Staff offices	500	19	0,60	80
Waiting lounge	200	22	0,40	80
Day hallways	100 ground	22	0,40	80
Night hallways	50 ground	22	0,40	80
Rooms (general)	100	22	0,40	80
Rooms (reading zone)	300	22	0,40	80
Examination and treatment	1000	19	0,70	90
Preoperative and recovery	500	19	0,60	90



Offices / Schools

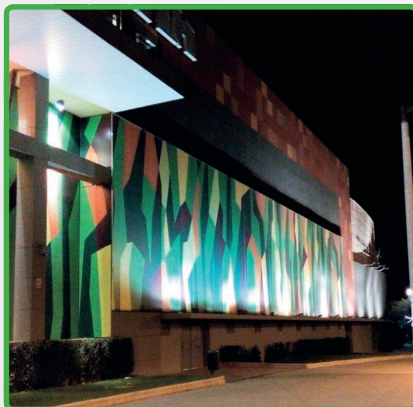


Norm: UNE 12464
Work places lightings.

	E_m Lux ⁽¹⁾	UGR _L ⁽²⁾	U_o ⁽⁵⁾	IRC ⁽³⁾ (R _a)
Archive, copies, etc.	300	19	0,40	80
Writing, reading, data treatment	500	19	0,60	80
Technical drawing	750	16	0,70	80
Show repetition	300	22	0,60	80
Meetings lounge	500	19	0,60	80



Malls / Leisure rooms / Sports facilities



Norm: UNE 12464
Work place lighting

	E_m Lux ⁽¹⁾	UGR _L ⁽²⁾	U_o ⁽⁵⁾	IRC ⁽³⁾ (R _a)
General lighting	300	22	0,40	80

Norm: UNE 12193
Sports facilities lighting

	E_m Lux ⁽¹⁾	U_m ⁽⁴⁾	IRC ⁽³⁾ (R _a)
General lighting	300-200	0,3-0,8	20-60



¹ E_m Lux: The medium level of light measured in luxes in your work or ground according to the area to illuminate.

² UGR_L: Unified glare index limit, maximum allowed.

³ IRC: Chromatic reproduction index required

⁴ U_m: Uniformity of illumination measurement (U) = minimum luminance (E_{min}) / medium illumination (E_{med}) / minimum required according to the type of installation.

⁵ U_o: Global uniformity (U_o) = minimum luminance (L_{min}) / average luminance (L_m).

Apartment / Subways / Public transportation



saba^o
aparcamientos



Norm: UNE 12464
Work places lightings

	E _m Lux ⁽¹⁾	UGR _L ⁽²⁾	U _o ⁽⁵⁾	IRC ⁽³⁾ (R _g)
Access ramp (day)	300 ground	25	0,40	40
Access ramp (night)	75 ground	25	0,40	40
Street circulating	75 ground	25	0,40	40
Parking areas	75 ground	-	0,40	40
Cash register	300	19	0,60	80



Warehouses



BRICOMART



EUROCOR S.A.
ALMACEN, COBERTIZOS Y SERVICIOS
SOLUCIONES DE COBERTIZOS INDUSTRIALES
CON LADOS DE 30 Y 30

Norm: UNE 12464
Work places lightings

	E _m Lux ⁽¹⁾	UGR _L ⁽²⁾	U _o ⁽⁵⁾	IRC ⁽³⁾ (R _g)
Storage room	100 ground	25	0,40	60
Packages manipulation	300	25	0,60	60
Shelf storage(hallways)	150 ground	22	0,40	60
Shelf face	200	-	0,40	60
General job position	300	25	0,60	80
Quality control	1000	19	0,70	80



Factories



KÖMMERLING[®]



TUBÁCEX
GROUP

Norm: UNE 12464
Work places lightings

	E _m Lux ⁽¹⁾	UGR _L ⁽²⁾	U _o ⁽⁵⁾	IRC ⁽³⁾ (R _g)
Storage room	100 ground	25	0,40	60
Packages manipulation	300	25	0,60	60
Shelf storage(hallways)	150 ground	22	0,40	60
Shelf face	200	-	0,40	60
General job position	300	25	0,60	80
Quality control	1000	19	0,70	80



¹ E_m Lux: The medium level of light measured in luxes in your work or ground according to the area to illuminate.

² UGR_L: Unified glare index limit, maximum allowed.

³ IRC: Chromatic reproduction index required

⁴ U_m: Uniformity of illumination measurement (U) = minimum luminance (E_{min}) / medium illumination (E_{med}) minimum required according to the type of installation.

⁵ U_o: Global uniformity (U_o) = minimum luminance (L_{min}) / average luminance (L_m).

 Ecuador




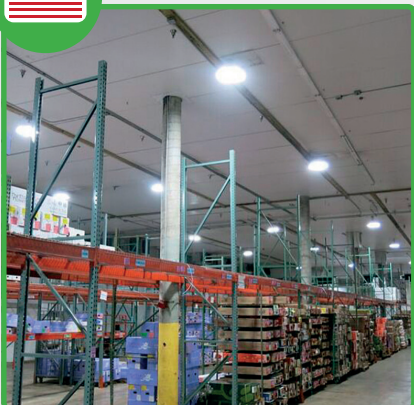
ETA FASHION



 Uio Aeropuerto Internacional de Quito



 United States



 SUNBURST FARMS



 THE USA BOUQUET COMPANY

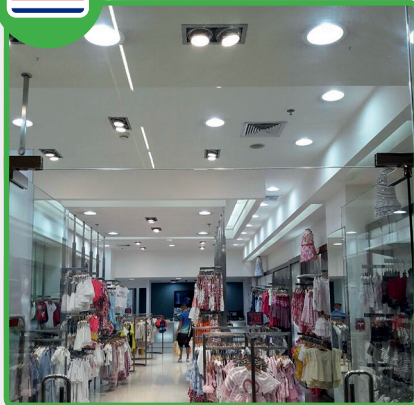


 France



 Palais Brongniart

 Costa Rica



 epk





 Mexico



 Peru



 Dominican Republic



Other: Brazil, Chile, Costa Rica, Guatemala, Panama...

What does the EXILIS+sensor integrated contribute to a LED light?

Economics: up to 60% less energy usage

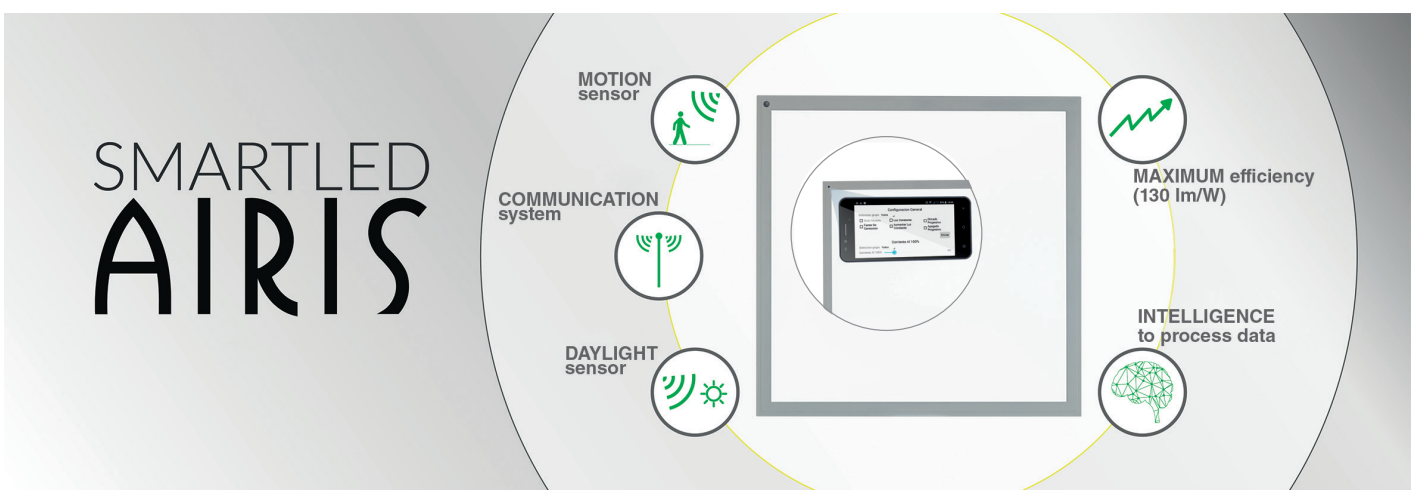
1. Extra **saving** up to **60%** of the consumption of the normal LED by having **motion and light sensors** integrated.
2. Reduced **maintenance** cost due to longer **lifespan**.
3. **One Driver** can be used to connect more than one fixture. If one is disconnected the **Smart Driver** will protect the rest of them.
4. Changing the **driver parameters remotely**, simplify and make the installation cheaper.

Lifespan: 300% more than any LED luminaire

5. The lifespan of the LEDs depends on the temperature and current of the chips, being **60% of the time at least dimmed**, the LEDs and the driver don't overheat and therefore do not suffer.
6. It is not necessary to change magnets or switches because of the **low peak current at start-up**, which also prevents capacitors and other components from suffering.
7. LED luminaire with a **Longer lifespan of the fixture** (the faulty component is usually the power supply). Our driver includes:
 - a) Overheat temperature protection
 - b) MTBF 500,000 hours at 80 ° F
 - c) 4kV surge voltage

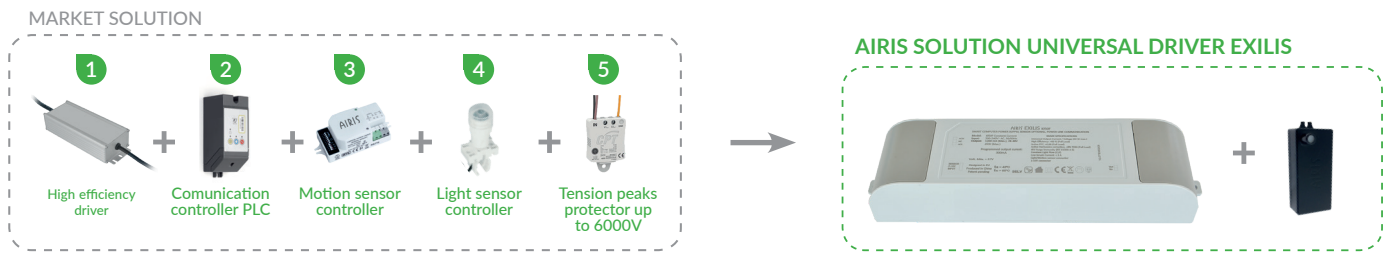
High technology / guarantee and safety in your installation

8. It doesn't produce **harmonics or any reactive power** (it doesn't interfere with other equipment).
9. **Integrated communication system** Integrated communication system provides data transmission through the power line. Compatible with any automaton.
10. **Compliance CTE (Technical Building Code)** for having a natural light sensor and a motion sensor that changes the flow of the luminaire based on natural light.





Power supply technology (five in one)



		Driver EXILIS (Class I) 50W I045F/ I045G series		Driver EXILIS (Class II) 50W I045E10Z	Driver EXILIS (Class II) 60W P053 series		Driver EXILIS (Class II) 80W I063E series	Driver EXILIS (Class II) 160W I135E series
		I045F10B	I045GI01	I045E10Z	P053D	P053EB	I063E101	I135E
AC input	Voltage range	180-264 V AC	90-264 V AC	90-305 V AC	90-305 V AC	90-305 V AC	90-305 V AC	90-305 V AC
	Voltage ratio	200-240 V AC	100-240 V AC	100-277 V AC	100-277 ⁽¹⁾ V AC	100-277 V AC	100-277 V AC	100-277 V AC
	Frequency	50/60 Hz		50/60 Hz	50/60 Hz		50/60 Hz	50/60 Hz
	Power Factor	>0,95		>0,95	>0,95		>0,95	>0,95
	Effectiveness	>89%		>90%	>88%		>90%	>90%
	Maximum input current	<8A (230 V AC)		<8A (230 V AC)	<8A (230 V AC)		<8A (230 V AC)	<8A (230 V AC)
DC output	Potency	18-50 W	18-50 W	18-50 W	18-60 W	18-80 W	18-80 W	36-160 W
	Voltage range	28-48 V DC		28-48 V DC	28-48 V DC		28-48 V DC	28-48 V DC
	Current settings range	50 mA - 1,6 A		50 mA - 1,6 A	50 mA - 2,1 A		50 mA - 2,5 A	100 mA - 5 A
Protect.	Maximum output range	45 W		45 W	53 W		63 W	135 W
	Overheating	110 °C		110 °C	110 °C		110 °C	110 °C
	Short circuit / open circuit	∩∩		∩∩	∩∩		∩∩	∩∩
Communication	Overvoltages	4 kV		4 kV	6 kV		4 kV	4 kV
	By the electric line	Modem PLC	NO	NO	YES	YES (Greater reach)	NO	NO
		Modem BT	YES	YES	YES		YES	YES
	Transfer rate	100 bps		100 bps	100 bps		100 bps	100 bps
	Max. distance between nodes	500 m		500 m	100 m	500 m	500 m	500 m
Repeater mode	NO		NO	YES		NO	NO	
Others	Information TX/RX	NO / YES		YES / YES	YES / YES		YES / YES	YES / YES
	Dimado levels	32		32	32		32	32
	Operating temperature	- 30/40 °C		- 30/50 °C	- 30/60 °C		- 30/50 °C	- 30/50 °C
Others	IP	IP20		IP20	IP20		IP67	IP67
	Dimensions	182 (200) x 48,5 x 36,1 mm		189 x 38,5 x 32 mm	162 x 42,3 x 33,5 mm		153 x 51 x 37 mm	Ø150 x 65 mm
	Weight	190 g		172 g	380 g		465 g	1500 g
	Control input (230V)	---		---	YES		---	---
	Sensor input presence	1 sensor		1 sensor	2 sensors		1 sensor	1 sensor
	Compatible with constant light	YES		YES	NO (Vehicle light measurement)		YES	YES
	Protection Array LEDs	∩∩		∩∩	∩∩		∩∩	∩∩
Compatible with color change adapter	NO		YES ⁽¹⁾	YES ⁽¹⁾		INCLUDED	NO	

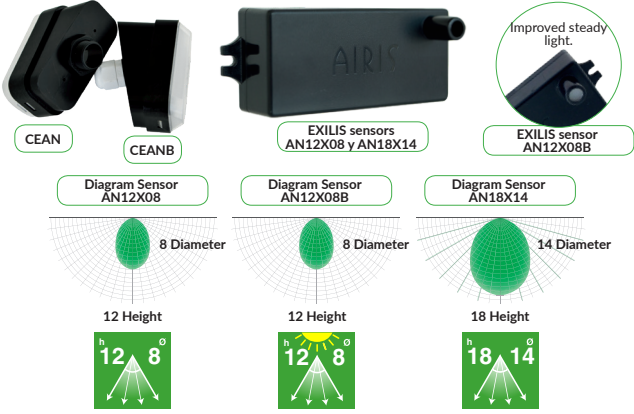
(1)Below 200V AC, the maximum power is 50W
 (2)Color Change Adapter available in March 2018. Consult updated codes with this new feature
NEW VERSIONS AND MODELS

Color change adapter⁽²⁾

	Code	Description	Color change regulation	Option	Dimensions (mm)
Converter adapter. color change	KITCCE	Converter adapter F.A. EXILIS to EXILIS color change	16 levels	Biorhythm	68 x 33 x 22

Sensors EXILIS

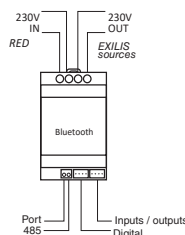
	Code	Description
Sensors	AN12X08	Sensor 40 feet maximum height detection; 26 feet maximum detection diameter
	AN12X08B	Sensor 40 feet maximum height detection; 26 feet maximum detection diameter. <i>Constant light function</i>
	AN18X14	Sensor 59 feet maximum height detection; 45 feet maximum detection diameter
	CEAN	Fixed waterproof box for EXILIS sensor
	CEANB	Airtight box for EXILIS sensor (Press tow)



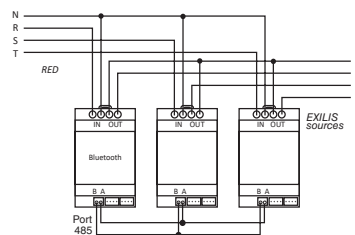
Communication modem EXILIS with a real time clock

FEATURES

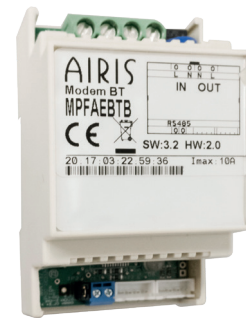
- RS485 communication and Bluetooth (app Pulse Generator)
- Monophasic / Triphasic: The modem is monophasic. It is possible to install three modems (1 Bluetooth and 2 standard) connected by the 485 port to build a triphasic communication system.
- Allows pulse and microcuts programming.
- No need for complementary installation
- Real time watch incorporated (optional)



Connection modem monophasic

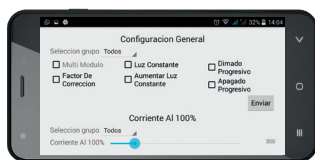


Connection modem triphasic



Modem Bluetooth programming for FA

	Code	Description	Dimensions (mm)	Weight (g)	Grade of protection	Max. current of entry (A)	Rank of voltage (V)	Consumption (W)	Protec. against overvoltage	Autonomy without food	Communications
Modems	MPFAEB	Modem programming standard for EXILIS	87,5 x 52,5 x 58 3 módulos carril DIN	100	IP20	10	100-265	2,5	2KV	5 días	Port 485 / Digital inputs and outputs
	MPFAEBTB	Bluetooth programming modem for EXILIS									Port 485 / Bluetooth / Digital inputs and outputs
	MPFAEBTC	Bluetooth programming modem + real time clock for EXILIS									Port 485 / Bluetooth / Digital inputs and outputs



App Pulse Generator



App pulse generator functions.

- Ways ON and OFF (Quick or Slow)
- Current changes
- Programming different configurations (Times and scopes)
- Assign lights to different groups
- Change the color of the light (on compatible models)
- Secure to avoid unauthorised usage
- Ability to name individual devices
- Real time clock (optional)

Programmer LiFi.

FEATURES

- Bluetooth communication (app Pulse Generator)
- Allows flash programming at long distances (up to 65 feet)
- Rechargeable battery
- Repeat last command
- Battery status indicator
- Auto-off
- External charger



LiFi Programmer

	Code	Description	Dimensions (mm)	Weight (g)	Battery capacity (mA)	Charging time (h)	Discharge time	Communications
LiFi	LBAT	Programmer LiFi	140 x 64 x 29	140	650	1	700 programming	Bluetooth

Modem PCL - Public lighting (see pag 43)

FEATURES

- Remote control communication through the electricity supply
- Allows remote control
- Three phase
- Installation test button (Allows to self-discover the mac of each light).

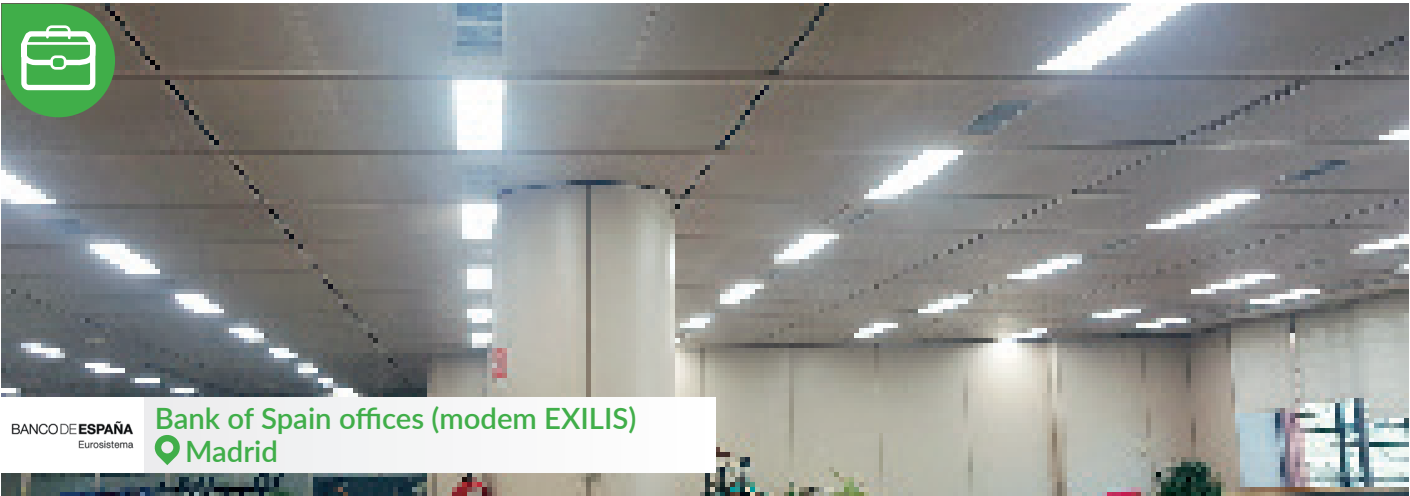


Modem PLC

	Code	Description	Dimensions (mm)	Weight (g)	Grade of protection	Rank of voltage (V)	Consumption (W)	Protec. against overvoltage	Communications
Modem PLC	SPLCSB	Modem PLC	88 x 58 x 90 Carril DIN	390	IP20	100-265	3,5	10kV	Port RS232 / Carrier PLC to three phases and neutral



Saint Gobain factory (LiFi programmer)
Avilés (Asturias)



Bank of Spain offices (modem EXILIS)
Madrid



Exchanger parking lot in America avenue (EXILIS modem)
Madrid



Subway system in Madrid (EXILIS modem)
Madrid

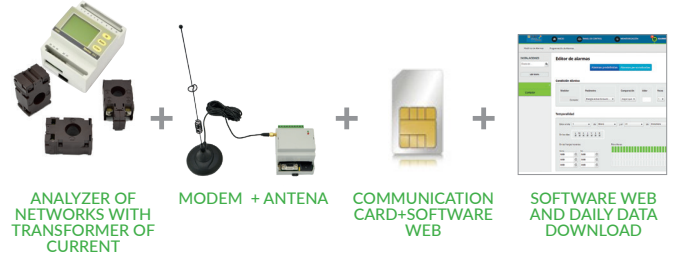
Change your company meter to AIRIS

Change your company meter with zero capital investment.



Additional sub-measure to change and control different circuits

Hire additional sub-measures to control the consumption of each circuit.



CONDITIONS

> COST:

The same that you pay to the electrical company (min.30€/month).

> WARRANTY:

Total in site during the contract period.

> INSTALLATION TIME:

60 days.

> PERMANENCE:

No permanence(6 months cancellation notice)

CONDITIONS

> COST:

40€/month.

> WARRANTY:

Total in site during the contract period.

> INSTALLATION TIME:

60 days.

> PERMANENCE:

No permanence(6 months cancellation notice)

Advantages that you get when you change your sub-measures and meter

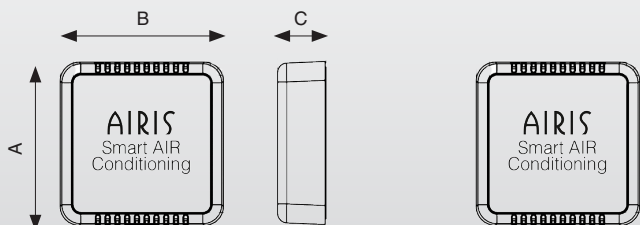
GET TO SAVE FROM 2% TO 20% ON YOUR ELECTRICAL BILL

1. Detecting hidden consumption
2. Modifying operation habits
3. Modifying operation maintenance
4. Adjusting contracted power
5. Employees and customer
6. Adjusting automatons, clock schedule, timer, climate control setpoint
7. Receiving consumption, energy and power alarms

WE OFFER DAILY INFORMATION IN AIRIS CONTROL

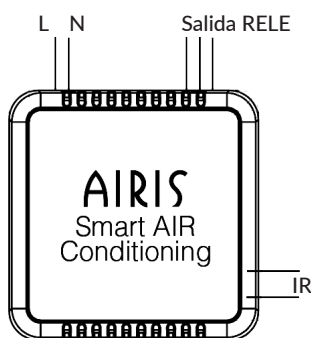
ASAC allows you to save up to 60% of the energy that you consume with your AC. Get to know and remotely control the temperature of the different areas, and help to increase the efficiency.

Material	Plastic
Degree of protection	IP20
Work temperature	-55...+125°C

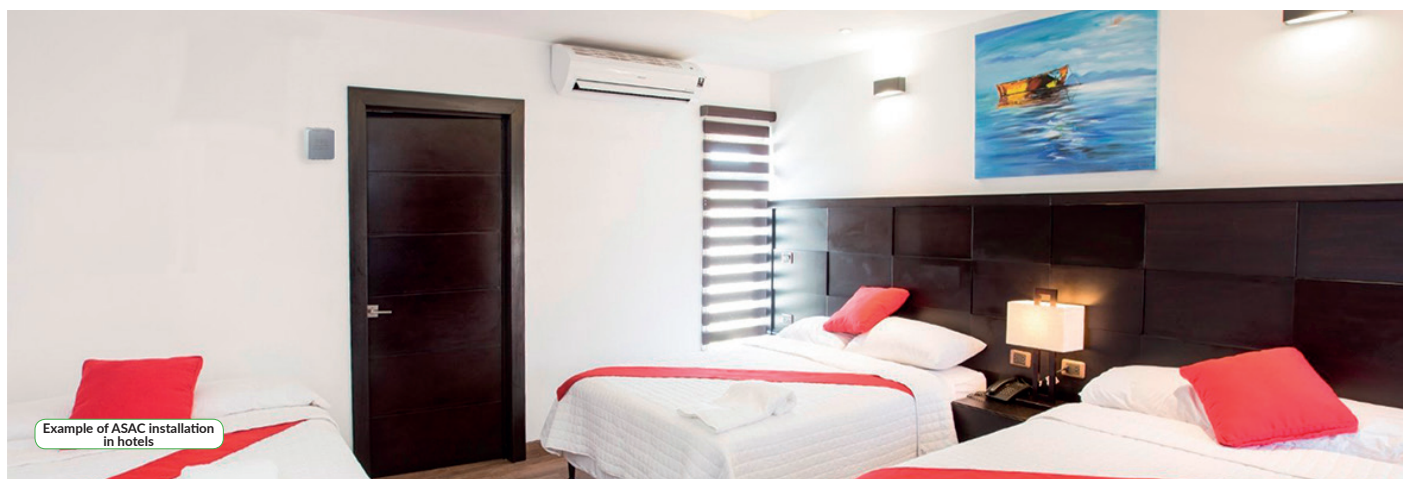


	Maximum total consumption (W)	Average total consumption (W)	Dimensions AxBxC (mm)	Input voltage (V)	Sensor range presence (m)	Sensor range temperature (°C)
ASAC	3	2	86x86x25	100 - 277	10 ... 12	-55 ... +125

The AIRIS smart AC integrates Wifi communication, high sensitivity presence sensor that reaches up to a 10 m radius and 12 m in height, a temperature sensor, an infrared receptor and transmitter that communicates with your current AC. A real time clock that works even when there is no internet connection and a relay that could cut the fancoil feeding.



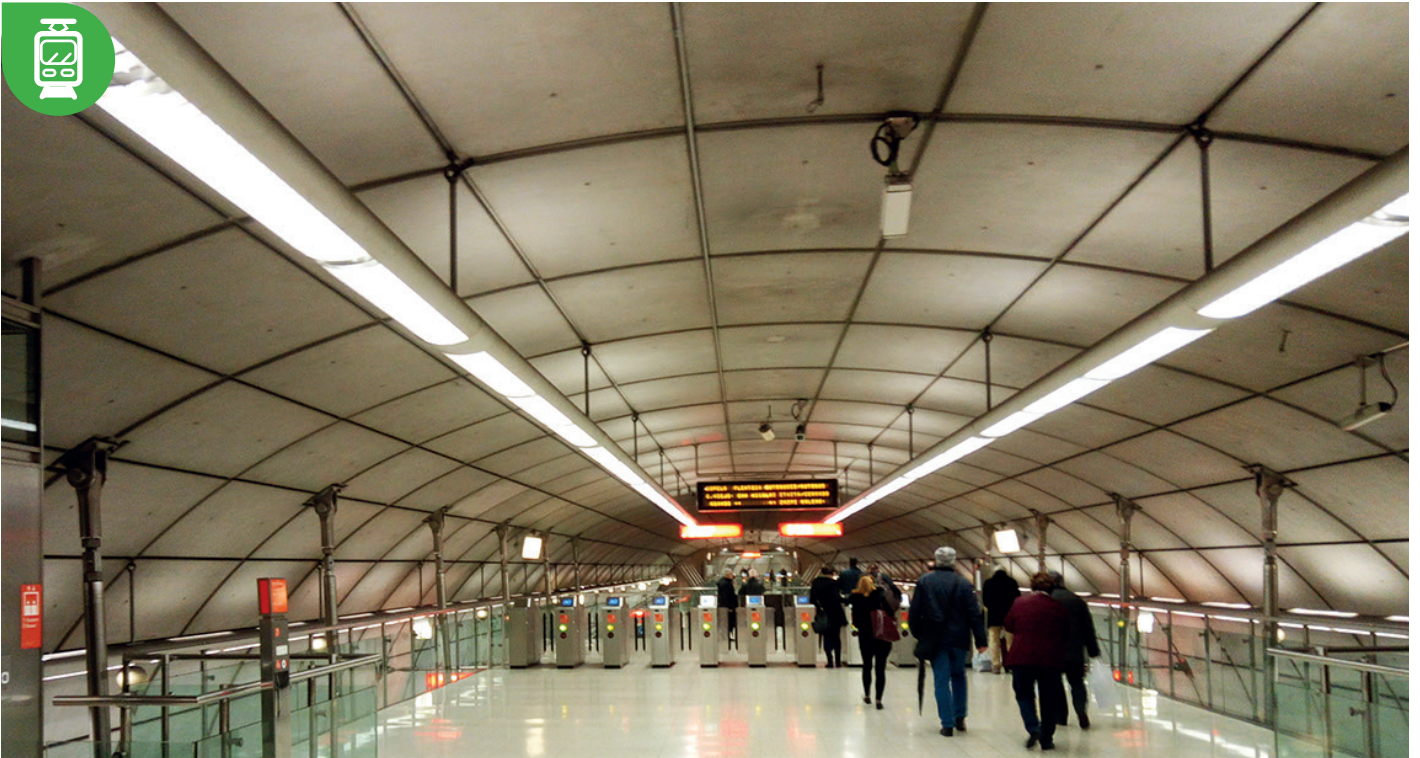
Compatible with the main A / C brands in the market



Example of ASAC installation in hotels



School GENÇANA
Valencia



Metro Station Bilbao
Bilbao

(1) Data +/-5%
(2) Data +/-10%(consumption with power supply Internal or external)
(3) The data shown correspond to the color 5000k-c Cold. To obtain 4000k subtract 4% to get color data.
(4) The consumption depends according with the electronic ballast or the power supply usage.
(5) It is essential to use the electronic ballast.



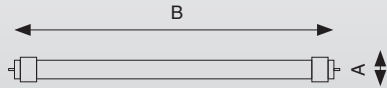
Crystal tubes with PET protection that avoids particle detachment when it breaks.
 Maximum adjustable efficiency tubes with internal or external power supply.
 Compatible tubes with electronic ballast. Fit and forget.

	T8 F.Internal	T6 F.Internal	T8 F.External	T5 F.External	T8 Bal. Elect.	T5 Bal. Elect.	UL
Base	G13	G5	G13	G5	G13	G5	G13
Power supply	Internal	Internal	External	External	Ballast Elect.	Ballast Elect.	Internal
Regulations	No	No	EXILIS	EXILIS	No	No	No
Power factor ⁽¹⁾	0,95	0,95	-	-	0,95	0,95	0,95
Angle to 10% / 50%	>160° / 135°	>160° / 125°	>160° / 135°	>160° / 130°	>160° / 135°	>160° / 130°	>160° / 135°

- Tube T8 Crystal Internal Source
- Tube T6 Crystal Internal Source
- Tube T8 Crystal External Source
- Tube T5 C Crystal External Source
- Tube T8 Crystal Electronic ballast
- Tube T5 Crystal Electronic ballast HE
- Tube T5 Crystal Electronic ballast HO



- 6700K (6300-7000) **F** Freeze/Frío
- 5000K (4800-5300) **C** Cold/Natural
- 4000K (3800-4300) **N** Neutral/Neutro
- 3000K (2800-3300) **W** Warm/Cálido

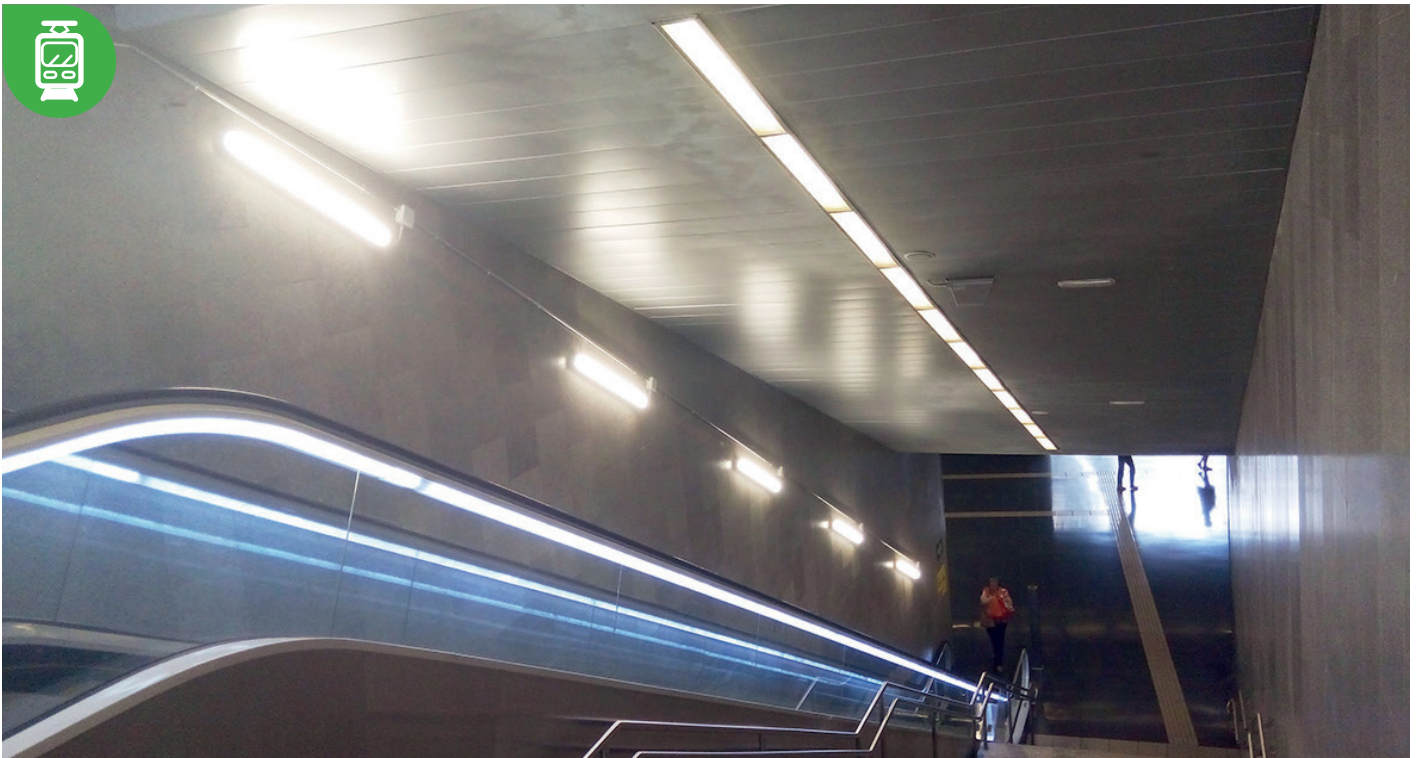


	Type	Total consumption(W) ⁽²⁾	Code	Dimensions AxB (mm)	Weight (g)	Input voltage (V AC)	THDI (%)	Luminous flux(lm) ⁽³⁾	Efficiency (lm/W) ⁽³⁾	
Internal power supply	T8 Crystal	600mm	9	C609(F/C/N/W)MTB	Ø26x600	135	100-265	<25	900	100
		900mm	12	C912(F/C/N/W)MTB	Ø26x900	200	100-265	<25	1200	100
		1200mm	18	C218(F/C/N/W)MTB	Ø26x1200	270	100-265	<25	1800	100
		1200mm	12,5	C213(F/C/N/W)MTI	Ø26x1200	270	100-265	<25	1625	130
		1500mm	18	C518(F/C/N/W)MTI	Ø26x1500	350	176-265	<25	2340	130
		1500mm	24	C524(F/C/N/W)MTI	Ø26x1500	350	176-265	<25	3120	130
Internal power supply	T6 Crystal	600mm	10	T610(F/C/N/W)MTB	Ø20x549	85	100-265	<25	1400	140
		900mm	13,5	T914(F/C/N/W)MTB	Ø20x849	135	100-265	<25	1890	140
		1200mm	21	T221(F/C/N/W)MTB	Ø20x1149	170	100-265	<25	2940	140
		1500mm	26	T526(F/C/N/W)MTB	Ø20x1449	220	100-265	<25	3640	140
External power supply	T8 Crystal	600mm	8,6	C608(C/N/W)MO(A/C)	Ø26x600	115	38-42	200	990	115
		900mm	11,5	C910(C/N/W)MOA	Ø26x900	160	38-42	260	1320	115
		1200mm	17,2	C215(C/N/W)MO(A/C)	Ø26x1200	230	38-42	400	1980	115
		1500mm	22	C520(C/N/W)MO(A/C)	Ø26x1500	245	38-42	500	2530	115
		1500mm	39	T535(C/N/W)MOD	Ø16x1449	220	38-42	875	5070	130
External power supply	T5 Crystal	600mm	10,7	T609(C/N/W)MOB	Ø16x549	75	38-42	240	1210	113
		900mm	16,6	T915(C/N/W)MOB	Ø16x849	110	38-42	375	1870	113
		1200mm	22,4	T220(C/N/W)MOB	Ø16x1149	140	38-42	500	2530	113
		1500mm	28,8	T526(C/N/W)MOC	Ø16x1449	220	38-42	650	3600	125
		1500mm	39	T535(C/N/W)MOD	Ø16x1449	220	38-42	875	5070	130
Electronic ballast tubes ⁽⁶⁾	T8 Crystal	600mm	9	C607(C/N/W)MTJ	Ø26x600	140	it is essential to keep the ballast installed	900	100	
		1200mm	18	C216(C/N/W)MTJ	Ø26x1200	270		1800	100	
		1500mm	24	C522(C/N/W)MTJ	Ø26x1500	350		2400	100	
	T5 Crystal HE	600mm	10,2	T607(C/N/W)MTB	Ø16x549	76	it is essential to keep the ballast installed	1015	100	
		900mm	13,8	T911(C/N/W)MTB	Ø16x849	120		1375	100	
		1200mm	16,8	T214(C/N/W)MTB	Ø16x1149	152		1680	100	
		1500mm	22	T519(C/N/W)MTB	Ø16x1449	200		2090	95	
	T5 Crystal HO	600mm	16,1	T613(C/N/W)MTD	Ø16x549	76	it is essential to keep the ballast installed	1560	97	
		900mm	25	T922(C/N/W)MTD	Ø16x849	120		2420	97	
		1200mm	33,1	T230(C/N/W)MTD	Ø16x1149	152		3210	97	
1500mm		41	T538(C/N/W)MTD	Ø16x1449	200	3690		90		

Other tube models: flesh color, PLL, plant growth; 1800mm, 2400mm
 Check availability



Parking Hotel Praga
Madrid

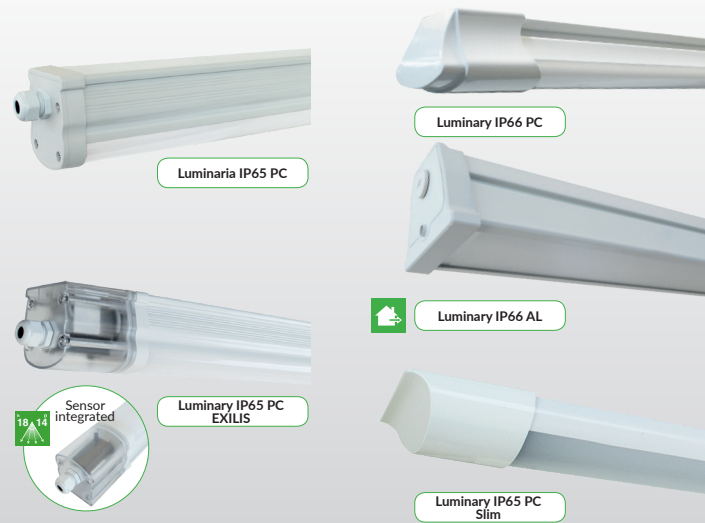
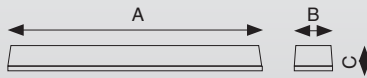


Subway system BCN TMB
Barcelona

Take advantage of having an effective and complete solution with easy and compatible EXILIS power supply.

	IP66 PC	IP65 PC Slim	IP65 PC	IP65 PC EXILIS	IP66 AL
Protection grade	IP66	IP65	IP65	IP65	IP66
Material	Plastic	Plastic	Plastic	Plastic	Aluminum and Plastic
Diffuser	Translucent	Translucent	Translucent	Translucent	Translucent
Power supply	Standard	Standard	Standard	EXILIS	Standard / EXILIS
Regulations	No	No	No	EXILIS	No / EXILIS
Power factor ⁽¹⁾	0,95	0,95	0,95	0,95	0,95
Angle to 50%	117°	110°	117°	117°	110°

6700K (6300-7000) Freeze/Frío
 5000K (4800-5300) Cold/Natural
 4000K (3800-4300) Neutral/Neutro
 3000K (2800-3300) Warm/Cálido



	Type	Total consumption (W) ⁽²⁾	Code	Dimensions AxBxC (mm)	Weight (g)	Input voltage (V AC)	THDi (%)	Voltage DC (V)	DC current (mA)	Luminous flux (lm) ⁽³⁾	Efficiency (lm/W) ⁽³⁾
IP66 PC	600mm	13	LP613	680x80x50	400	220-240	<10	100-120	240	1400	108
	1200mm	26	LP226	1290x80x50	850	220-240	<10	100-120	120	2860	110
IP65 PC Slim	600mm	15	LP615	600x78.4x28.2	450	100-240	<20	64-69	220	1425	95
	Type	Total consumption (W) ⁽²⁾	Code	Dimensions AxBxC (mm)	Weight (g)	Input voltage (V AC)	THDi (%)	Voltage DC (V)	DC current (mA)	Luminous flux (lm) ⁽³⁾	Efficiency (lm/W) ⁽³⁾
IP65 PC	600mm	18	LP618	631x63x73	720	220-240	<10	70-75	220	2000	111
	1200mm	32	LP232	1361x64x76	1300	220-240	<10	70-75	390	3840	120
	1500mm	42,5	LP543	1661x64x76	1700	220-240	<10	70-75	520	5100	120
IP65 PC EXILIS	Type	Total consumption (W) ⁽²⁾	Code	Dimensions AxBxC (mm)	Weight (g)	Input voltage (V AC)	THDi (%)	Voltage DC (V)	DC current (mA)	Luminous flux (lm) ⁽³⁾	Efficiency (lm/W) ⁽³⁾
	1200mm	40	LP240	1361x64x76	1300	100-277	<10	42-47	850	3600	90
	1500mm	55	LP555	1661x64x76	1700	100-277	<8	46-51	1050	6000	109
IP66 AL Luminaires	Type	Total consumption (W) ⁽²⁾	Code	Dimensions AxBxC (mm)	Weight (g)	Input voltage (V AC)	THDi (%)	Voltage DC (V)	DC current (mA)	Luminous flux (lm) ⁽³⁾	Efficiency (lm/W) ⁽³⁾
	640mm	30	LA630	640x112x89	1750	220-240	<15	79-84	320	3600	120
	1240mm	40	LA240	1240x112x89	3500	220-240	<15	106-111	340	4800	120
	1240mm	40	LA240	1240x112x89	3500	200-240	<10	39-44	850	4800	120
Acc.	-	-	CISLIP66	Installation box for sensor in luminaire IP66 AL							

(1) Data ± 5%

(2) Data ± 10%

(3) The data shown correspond to the color 5000k-c Cold. To obtain 4000k subtract 4% to get color data 10%



Universitat
de les Illes Balears

University de las Islas Baleares
Palma de Mallorca

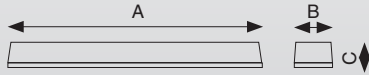


Supermarket El Jamón
Écija (Sevilla)

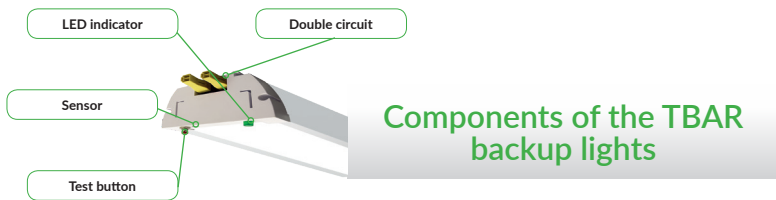
Get a solution that stands out for its aesthetic and design with a lighting product that can be assembled together. Save on installation cost and take advantage of the EXILIS driver. This can be assembled in different types of facility.

	TBAR	Luminaria Lineal	Luminaria Carril
Protection grade	IP20	IP20	IP20
Material	Plastic	Plastic	Steel and Plastic
Diffuser	Translucent	Translucent	Transparent
Power supply	Standard / EXILIS	EXILIS	Standard / EXILIS
Regulations	No / EXILIS	EXILIS	No / EXILIS
Power factor ⁽¹⁾	0,95	0,95	0,95
Angle to 50%	>160° /110°	>160° /110°	Consult

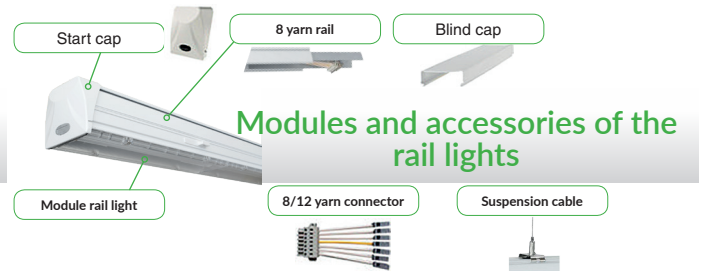
5000K (4800-5300) Cold/Natural
 4000K (3800-4300) Neutral/Neutro
 3000K (2800-3300) Warm/Cálido



	Type	Total consumption (W) ⁽²⁾	Code	Dimensions AxBxC (mm)	Weight (g)	Input voltage (V AC)	THDi (%)	Voltage DC (V)	DC current (mA)	Luminous flux (lm) ⁽³⁾	Efficiency (lm/W) ⁽²⁾	
TBAR	1500mm	40	TB1540	1500x114x73.5	2710	200-240	<20	34-39	1050	4800	120	
	1500mm	40	TB1570	1500x114x73.5	2710	200-240	<10	34-39	1050	4800	120	
	1500mm	70		1500x114x73.5	2800	100-277	<10	34-39	1700	7350	105	
	1500mm	40	TB1570	1500x114x73.5	3260	200-240	<10	34-39	1050	4800	120	
	1500mm	70		1500x114x73.5	3350	100-277	<10	34-39	1700	7350	105	
Linear light	1200mm	20	LL220	1200x83x50	2300	200-240	<15	39-44	450	2300	120	
	1200mm	40		1200x83x50	2300	200-240	<10	39-44	900	4600	115	
Rail light	Module	90°	50	LR550	1499x67x38	2800	220-240	<17	69-74	620	8000	160
		90°	50	LR550	1499x67x38	2800	200-240	<8	40-45	1050	8000	160
		120°	50	LR550	1499x67x38	2800	220-240	<17	69-74	620	8000	160
		120°	50	LR550	1499x67x38	2800	200-240	<8	40-45	1050	8000	160
		90°	70	LR570	1499x67x38	2800	220-240	<17	69-74	1000	11200	160
		90°	70	LR570	1499x67x38	2900	100-277	<8	40-45	1500	11200	160
		120°	70	LR570	1499x67x38	2800	220-240	<17	69-74	1000	11200	160
		120°	70	LR570	1499x67x38	2900	100-277	<8	40-45	1500	11200	160
Accessories	Rail 8/12 Yarn		CAR8H15 / CAR12H15	1500x67x38	-	-	-	-	-	-	-	
	Connector 8/12 yarn		CLR8H / CLR12H	-	-	-	-	-	-	-	-	
	Suspension cable		S3LR	3000	-	-	-	-	-	-	-	
	Start cap		ECLR	-	-	-	-	-	-	-	-	
	Blind cap		LRTC	-	-	-	-	-	-	-	-	



Components of the TBAR backup lights



Modules and accessories of the rail lights

(1) Data ± 5%
 (2) Data ± 10%
 (3) The data shown correspond to the color 5000k-c Cold. To obtain 4000k subtract 4% to get color data 10%
 (4) This module includes emergency kit, autonomy 5w, 2 hours.



Movistar store

📍 Centro comercial Plaza Mar 2 (Alicante)



Laboratories Ferrer

📍 Sant Cugat del Vallés (Barcelona)

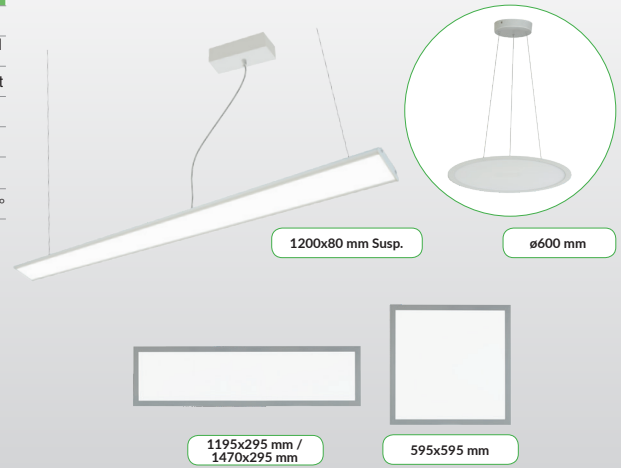
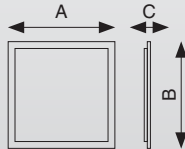
(1) Data \pm 5%
(2) Data \pm 10%
(3) The data shown correspond to the color 5000k-c Cold. To obtain 4000k subtract 4% to get color data 10%
(4) Kit formatted by 2 panels 1 sensor 1 power supply



Solution that includes elegant design and easy installation in a product that is compatible with all the advantages of the EXILIS power supply.
Control, program and regulate the lighting to your taste.

	Standard	EXILIS	Suspension	Circular	Special measures	UL
Protection grade	IP20	IP20	IP20	IP20	IP20	IP20
Material	Plastic and Aluminum.	Plastic and Aluminum.	Plastic and Aluminum.	Plastic and Aluminum.	Plastic and Aluminum.	Plastic and Aluminum.
Diffuser	Translucent	Translucent	Translucent	Translucent	Translucent	Translucent
Power supply	Standard	EXILIS	EXILIS	Standard	EXILIS	Standard
Regulations	No	EXILIS	EXILIS	No	EXILIS	1-10V
Power factor ⁽¹⁾	0,95	0,95	0,95	0,95	0,95	0,95
Angle to 50%	>160° / 110°	>160° / 110°	>165° / 110°	>160° / 115°	>160° / 110°	>160° / 110°

5000K (4800-5300) Cold/Natural
4000K (3800-4300) Neutral/Neutro
3000K (2800-3300) Warm/Cálido



	Type	Total consumption (W) ⁽²⁾	Code	Dimensions AxBxC (mm)	Weight (g)	Input voltage (V AC)	THDi (%)	DC Voltage (V)	DC current (mA)	Luminous flux (lm) ⁽³⁾	Efficiency (lm/W) ⁽³⁾
Standard Panel	595x595	36	L5936(C/N)F	595.5x595.5x8.2	2000	200-240	<20	39-44	750	3600	100
	Type	Total consumption (W) ⁽²⁾	Code	Dimensions AxBxC (mm)	Weight (g)	Input voltage (V AC)	THDi (%)	DC Voltage (V)	DC current (mA)	Luminous flux (lm) ⁽³⁾	Efficiency (lm/W) ⁽³⁾
Panel EXILIS	595x595	45	L5945(C/N/W)O	595x595x9	2500	200-240	<8	44-49	900	5175	115
	1195x595	45	L1245(C/N/W)O	1195x295x13	2570	200-240	<8	44-49	900	4950	110
	595x595	2 x 40	(4)2x L5945(C/N/W)O	595x595x9	2 x 2500	200-240	<8	44-49	800	2 x 4680	117
	1195x595	2 x 40	(4)2x L1245(C/N/W)O	1195x295x13	2 x 2570	200-240	<8	44-49	800	2 x 4480	112
Suspension Panel	Type	Total consumption (W) ⁽²⁾	Code	Dimensions AxBxC (mm)	Weight (g)	Input voltage (V AC)	THDi (%)	DC Voltage (V)	DC current (mA)	Luminous flux (lm) ⁽³⁾	Efficiency (lm/W) ⁽³⁾
	1200x80	40	L1284CH	1200x80x20	1200	200-240	<10	33-38	1000	2600	65
Circular Panel	Type	Total consumption (W) ⁽²⁾	Code	Dimensions AxBxC (mm)	Weight (g)	Input voltage (V AC)	THDi (%)	DC Voltage (V)	DC current (mA)	Luminous flux (lm) ⁽³⁾	Efficiency (lm/W) ⁽³⁾
	Ø580	36	L636RD	Ø580x12	2870	200-240	<20	33-38	900	3420	95
Custom Panels	Type	Total consumption (W) ⁽²⁾	Code	Dimensions AxBxC (mm)	Weight (g)	Input voltage (V AC)	THDi (%)	DC Voltage (V)	DC current (mA)	Luminous flux (lm) ⁽³⁾	Efficiency (lm/W) ⁽³⁾
	908x200	32	L9132(C/N)C	908x200x9	1850	200-240	<10	41-46	650	3050	95
	1470x295	50	L1535(N)G	1470x295x11	3920	200-240	<8	43-48	1000	6250	125
	1717x297	30	L1730(N)	1717x297x12	3600	200-240	<10	34-39	750	3000	100

Using the KITCOE adapter (see page 5) you can have panels with variable color from 2200K to 5800K

	Code	Outside dimensions (mm)	Input dimensions (mm)	Finish
Recessed framework slim panel	L59MB	630x630x30	596x596	White
	L130MB	1235x335x30	1240x320	White
Surface framework panel	MLE60PB	600x600x50	586x586	White
	MP123B	1200x300x50	1186x286	White

Panels with UL certification.



	Type	Total consumption (W) ⁽²⁾	Code	Dimensions AxBxC (mm)	Weight (g)	Input voltage (V AC)	THDi (%)	Luminous flux (lm) ⁽³⁾	Efficiency (lm/W) ⁽³⁾
Panel UL	600x600	40	L2240(C/N/W)BUL	603x603x11	3000	100-277	<20	4000	100
	1200x600	50	L2450(C/N/W)BUL	1203x603x11	6500	100-277	<20	5000	100



Mall La Dehesa - Alcampo
Alcalá de Henares (Madrid)



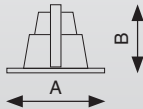
Offices Grupo ANAYA
Madrid



Products up to 130lm/w. Models with sensors integrated. Models with colour selection. Different measurements and designs

	DL standard	DL Slim	DL Surface	DL Switch Color	DL UL	DL ETL
Protection grade	IP40	IP20	IP20	IP54	IP20	IP20
Material	Plastic, Al	Plastic, Al	Plastic, Al	Plastic, Al	Plastic, Al	Plastic, Al
Diffuser	Translucent	Translucent	Translucent	Translucent	Translucent	Translucent
CRI	>80	>80	>70	>80	>80	>80
Power supply	Standard / EXILIS	Standard / EXILIS	Standard	Standard	Standard	Standard
Regulations	No / EXILIS	No / EXILIS	No	TRIAC	TRIAC	TRIAC
Power factor ⁽¹⁾	0,95	0,95	0,95	0,95	0,9	0,9
Angle to 10% / 50%	>160°/100°	>160°/110	>160°/110°	>100°/90°	>100°/90°	>100°/100°

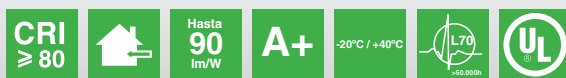
5000K (4800-5300) Cold/Natural
 4000K (3800-4300) Neutral/Neutro
 3000K (2800-3300) Warm/Calído
 SWC (2200-5800) Color variable



	Type	Total consumption (W) ⁽²⁾	Code	Dimensions AxB (mm)	Cutting dimension (mm)	Weight (g)	Input voltage (V AC)	THDi (%)	DC Voltage (V)	DC current (mA)	Luminous flux (lm) ⁽³⁾	Efficiency (lm/W) ⁽³⁾
Downlight standard	4"	13	DL134	Ø145x61	Ø120 - 130	340	100-240	<20	72-77	150	1200 ⁽³⁾	92 ⁽³⁾
	6"	6	DL066	Ø190x74	Ø160 - 170	500	100-240	<20	72-77	75	780 ⁽³⁾	130 ⁽³⁾
	8"	12	DL128	Ø225x84	Ø200 - 210	635	100-240	<20	72-77	170	1560 ⁽³⁾	130 ⁽³⁾
	8"	20	DL208	Ø225x84	Ø200 - 210	635	100-240	<20	72-77	250	2600 ⁽³⁾	130 ⁽³⁾
	8"	20	DL208	Ø225x84	Ø200 - 210	590	200-240	<15	38-43	450	2600 ⁽³⁾	130 ⁽³⁾
	8" SWC	20	DLC208	Ø225x84	Ø200 - 210	590	200-240	<15	38-43	450	2400 ⁽⁴⁾	120 ⁽⁴⁾
Downlight Slim	Square	18	DLS18	□225x11,5	210x210	550	200-240	<15	26-30	550	1170	65
	Square	18	DSC18	□225x20	210x210	500	200-240	<20	52-57	300	1500	83
Downlight Surface	Half moon surface	7	DS0	Ø300x100	-	560	200-240	<22	91-96	65	320	46
	Surface	13	DS0	Ø300x100	-	1100	200-240	<22	42-47	300	820	63
Downlight Switch Color (SWC)	4"	13	DLC134	Ø145x85	Ø125-135	280	200-240	<20	68-73	150	1365	105
	6"	18	DLC186	Ø172x95	Ø150-165	350	200-240	<20	68-73	250	1890	105
	8"	25	DLC258	Ø228x98	Ø200-210	560	200-240	<20	68-73	340	2625	105

Using the KITOCE adapter (see page 5) you can have downlights with variable color from 2200K to 5800K.

Downlights with UL certification.



	Type	Total consumption (W) ⁽²⁾	Code	Dimensions AxB (mm)	Cutting dimension (mm)	Weight (g)	Input voltage (V AC)	THDi (%)	DC Voltage (V)	DC current (mA)	Luminous flux (lm) ⁽³⁾	Efficiency (lm/W) ⁽³⁾
Downlight UL	4"	9	DL094	Ø130x73	Ø100	350	90-140	<20	33-38	220	750	83
	6"	14	DL146	Ø185x77	Ø150	460	90-140	<20	48-58	240	1200	86
Downlight ETL	6"	15	DL156	Ø190x24	Ø160	500	100-130	<20	67-75	120	1575	105

(1) Data ± 5%
 (2) Data ± 10%

(3) The data shown correspond to the color 5000k-c Cold. To obtain 4000k subtract 4% to get color data 10%

(4) The data shown correspond to the color 4000K - Neutral. To obtain 5000K color data subtract 4%. To obtain color data 3000K subtract 10%. Data ± 10%



Supermercados DÍA
Madrid



Supermercado La Sirena
Barcelona



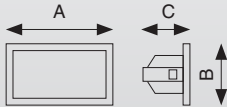
Ideal solution to highlight your products. Distinguish your products with a better quality lighting

	Accentuation	Spot COB	AR111
Protection grade	IP20	IP20	IP20
Material	Plastic & Al	Plastic & Al	Plastic & Al
Difuser	-	-	-
Power supply	Standard	Standard	EXILIS
Regulations	No	No	EXILIS
Power factor ⁽¹⁾	0,95	0,95	0,95
Angle to 10% / 50%	Circ. >80° / 40° Rect. >140° / 90°	>70° / 38°	>40° / 24°



UGR <19

5000K (4800-5300) Cold/Natural
 4000K (3800-4300) Neutral/Neutro
 3000K (2800-3300) Warm/Cálido



UGR <19

UGR <19


	Type	Total consumption (W) ⁽²⁾	Code	Dimensions AxBxC (mm)	Cutting dimension (mm)	Weight (g)	Input voltage (V AC)	THDi (%)	DC Voltage (V)	DC current (mA)	Luminous flux (lm) ⁽³⁾	Efficiency (lm/W) ⁽³⁾	
													Accentuation
Accentuation	Circ.	Circular	37	HL4(C/N/W)C40	Ø190x155	Ø175	1155	220-240	<20	35-40	950	3450	93
		Circular	40	HL4(C/N/W)C40B	Ø190x155	Ø175	1155	220-240	<20	35-40	950	4800	120
	Rect.	Rectangular	40	HL40(C/N/W)	246x156x144,5	225x130	2300	200-240	<15	34-39	950	3900	98
		Rectangular	60	HL60(C/N/W)	246x156x144,5	225x130	2300	200-240	<15	34-39	1400	5700	95
Spot COB	Square	9	HL9(W)B	□93x78	Ø78	285	220-240	<15	34-39	200	800	89	
	3,5"	9	HL9(W)	Ø90x83	Ø78	275	220-240	<15	34-39	200	800	89	
	4"	12	HC1238(N/W)	Ø105x111	Ø95	210	220-240	<14	40-45	250	816	68	
	6"	20	HC2038(N/W)B	Ø145x135	Ø135	1155	220-240	<20	35-40	500	2000	100	
	3" Orientable	12	DC1238(N/W)	Ø85x108	Ø78	500	220-240	<14	40-45	250	816	68	
	AR111	AR111	27	GW5327(W)	Ø111x55		600	200-240	<15	33-38	700	2535	94

(1) Data ± 5%


(2) Data ± 10%

(3) The data shown correspond to the color 5000k-c Cold. To obtain 4000k subtract 4% to get color data 10%



 **La Sirena** Supermercado La Sirena
Barcelona

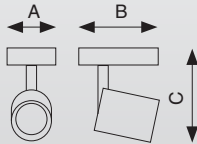


 **makro** Supermercado Makro
Alicante

Ideal for retail outlets and display requirements.
Maximize the results of your products with the different colours, potency and angles.
The best lighting quality with products up to 95 CRI

	COB	COB pink	RGBW
Protection grade	IP20	IP20	IP20
Material	Aluminum	Aluminum	Aluminum
Diffuser	-	-	-
Power supply	Internal	Internal	Internal
Regulations	No	No	No
Power factor ⁽¹⁾	0,95	0,95	0,95
Angle to 10% / 50%	>37°/24°	>73°/30°	12 a 24°

- 5000K (4800-5300) C Cold/Natural
- 4000K (3800-4300) N Neutral/Neutro
- 3000K (2800-3300) W Warm/Cálido
- Rosado (2200-3300) P Pink/Rosa



CRI ≥ 90

Up to 130 lm/W

A+

-20°C / +45°C

CE



	Type	Total consumption (W) ⁽²⁾	Code ⁽⁴⁾	Dimensions AxB (mm)	Weight (g)	Input voltage (V AC)	THDi (%)	DC Voltage (V)	DC current (mA)	Luminous flux (lm) ⁽³⁾	Efficiency (lm/W) ⁽³⁾	CRI _v
COB	White	20	TL20(W)D	Ø95x231x135	905	220-240	<23	32-37	500	2600	130	80
	White	30	TL30(W)E	Ø95x211x125	950	100-277	<15	32-37	790	3600	120	80
	White	40	TL40(W)E	Ø95x221x140	1000	100-277	<15	32-37	1050	4800	120	80
COB pink	White	40	TLC4 P30W	Ø100x164x210	1160	100-277	<15	33-37	1000	1900	48	80
RGBW	Foco	RGBW	TL85R24	Ø120x188x250	2300	220-240	<12	-	-	4500	53	90
	Acces.	Router WIFI DMX	TLROUT	134x85x35	350	220-240	It allows to control up to 30 RGBW spotlights					



Description	Triphase rail	
	White	Black
Threephase aluminum rail 1 m	TLCAR1WC	TLCAR1BC
Threephase aluminum rail 2 m	TLCAR2WC	TLCAR2BC
Rail supply+End cap	TLCAIWC	TLCAIS
Internal Union	TLCUWC	TLCUC
Flexible elbow for the rail connection 90°	TLC90WC	TLC90BC
Suspension cable for the installation 1200mm	TLCAC12W	TLCAC12B

(1) Data ± 5%
 (2) Data ± 10%
 (3) The data shown correspond to the color 5000k-c Cold. To obtain 4000k subtract 4% to get color data 10%
 (4) Check other colors



Hotel Yaramar
Fuengirola (Málaga)



Hotel Praga
Madrid

(1) Data ± 5%
(2) Data ± 10%. Consumption in the MR16 models does not include ballast consumption.
(3) The data shown correspond to the color 4000K - Neutral N. To obtain color data 3000K subtract 4%



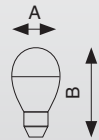


Divide the consumption in 10, multiply the lifespan of the product.

	Bipin	Dichroic	Light bulbs	High power light bulbs	PAR	UL
Protection grade	IP20	IP20	IP20	IP20	IP20	IP64
Material	Plastic	Plastic	Plastic	Plastic	Plastic	Plastic
Diffuser	Transparent	Lens	Translucent	Translucent	Lens	Transparent
Power supply	Internal / External	Internal / External	Internal / External	Internal / External	Internal / External	Internal / External



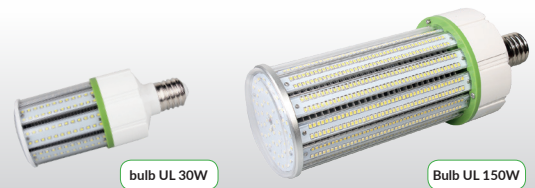
- 5700K (5310-6020) **F** Freeze/Frío
- 5000K (4800-5300) **C** Cold/Natural
- 4000K (3800-4300) **N** Neutral/Neutro
- 2700K (2500-2900) **W** Warm/Cálido



	Type	Total consumption (W) ⁽²⁾	Code	Dimensions AxB (mm)	Weight (g)	Input voltage (V/Hz)	THDI (%)	Luminous flux (lm) ⁽²⁾	Efficiency (lm/W) ⁽²⁾	Angle to 50% (°)	Power Factor ⁽¹⁾
Bipin	G9	2,3	G923 W	Ø20x53	10	220-240	<65	209	91	280°	0,4
Dichroic	MR16	4,5	MR164 W	Ø50x50	60	12V DC	-	395	88	40°	-
	MR16	7,5	MR167 W	Ø50x64	69	12V DC	-	550	73	36°	-
	GU10	4,5	GU104 W	Ø51x57	60	220-240	<190	405	90	40°	0,5
	GU10	7	GU107 W B	Ø51x57	60	220-240	<90	665	95	40°	0,8
Bulbs	E14	5,3	E145 W C	Ø35x104	40	200-240	<175	450	85	150°	0,9
	E27	5	E275 W	Ø60x114	110	200-240	<175	500	100	200°	0,5
	E27	5	E275 F B	Ø60x114	110	200-240	<175	625	125	200°	0,5
	E27	8	E278 W	Ø60x114	110	200-240	<160	810	101	200°	0,5
PAR	PAR20	7,5	L20 (N/W) 8D	Ø63x86	200	220-240	<32	650	87	25°	0,9
	PAR30	11	L30 (N/W) 11	Ø95x86	190	220-240	<22	965	88	25°	0,9
	PAR38	17	L38 (N/W) 17	Ø120x129	360	220-240	<22	1405	83	25°	0,9
High power bulbs	E27	18,5	E2702 (N/W)	Ø80x150	300	220-240	<25	2035	110	150°	0,9
	E27	27	E2703 (N/W)	Ø100x185	360	220-240	<25	2430	90	150°	0,9
	E27	36	E2704 (N/W)	Ø118x213	490	220-240	<25	3240	90	150°	0,9
	E40	65	E4007 C	Ø118x268	500	100-277	<25	8125	125	160°	0,9

¹110V bulbs. Check availability

Light bulbs with UL certification, Approved for the U.S.A.



	Type	Total consumption (W) ⁽²⁾	Code	Dimensions AxB (mm)	Weight (g)	Input voltage (V/Hz)	THDI (%)	Luminous flux (lm) ⁽²⁾	Efficiency (lm/W) ⁽²⁾	Angle to 50% (°)	Power Factor ⁽¹⁾
UL Bulbs	E39	30	E3930 C UL	Ø93x230	440	100-277	<15	3900	130	360°	0,9
	E39	60	E3960 C UL	Ø93x285	570	100-277	<15	7800	130	360°	0,9
	E39	120	E39A2 C UL	Ø125x310	1240	100-277	<15	15600	130	360°	0,9
	E39	150	E39A5 C UL	Ø125x335	1340	100-277	<25	19500	130	360°	0,9



Warehouse XPO logistics
Alovera (Guadalajara)



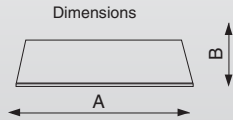
Printing house
Madrid



Stellar product in the logistic and industrial sector thanks to the integrated motion and presence sensors. Avoid glare and increase the uniformity in the workplace.

	IP20	IP65	IP65 + IP20	IP65 + IP20 45°
Protection grade	IP20	IP65	IP65 (module) IP20 (case)	IP65 (module) IP20 (case)
Material	Plastic & Aluminum	Plastic & Aluminum	Plastic & Aluminum	Plastic & Aluminum
Diffuser	Translucent	Transparent / Translucent	Translucent	Lens
Power supply	EXILIS / ELG	HBG / ELG	EXILIS	EXILIS
Regulation	EXILIS / 1-10V	1-10V	EXILIS	EXILIS
Work temperature	-30...+45	-30...+50	-20...+45	-20...+45
Power factor	0,95	0,95	0,95	0,95
Angle to 10% / 50%	>160°/100°	>150°/110°	>160°/100°	>160°/45°

5000K (4800-5300) Cold/Natural
4000K (3800-4300) Neutral/Neutro
3000K (2800-3300) Worm/Cálido



	Total consumption (W) ⁽²⁾	Code	Dimensions Ax B (mm)	Weight (g)	Input voltage (V AC)	THDi (%)	DC Voltage (V)	DC current (mA)	Luminous flux (lm) ⁽²⁾	Efficiency (lm/W) ⁽²⁾
IP20	65	LW06ES	Ø450x178	2030	200-277	<8	42-47	1300	8700	134
	145	LW13OG	Ø450x178	3880	200-277	<20	44-49	2800	19000	131
	145	LW13GS	Ø450x178	3990	200-277	<8	44-49	2800	19000	131
IP65	105	LW1012J	Ø252x200	3700	100-277	<20	46-51	2050	14700	140
	105	LW1012K	Ø252x200	3700	100-277	<20	46-51	2050	14700	140
	150	LW1512E	Ø252x200	3700	100-277	<20	40-45	3300	19500	130
	150	LW1512D	Ø252x200	3700	100-277	<20	40-45	3300	19500	130
	225	LW2212F	Ø280x228	5300	100-277	<20	40-45	5100	30000	133
	225	LW2212D	Ø280x228	5300	100-277	<20	40-45	5100	30000	133
IP20 + IP65	60	LW0610	Ø320x170	3000	100-277	<8	44-49	1150	7500	125
	60	LW0610B	Ø320x170	3000	100-277	<8	44-49	1150	7500	125
	80	LW0810	Ø320x170	3100	100-277	<8	45-50	1500	9600	120
	80	LW0810B	Ø320x170	3100	100-277	<8	45-50	1500	9600	120
	100 ⁽³⁾	LW1010	Ø320x170	3400	100-277	<8	45-50	1850	11500	115
	100 ⁽³⁾	LW1010B	Ø320x170	3400	100-277	<8	45-50	1850	11500	115
	150 ⁽⁴⁾	LW1510	Ø320x170	3500	100-277	<8	39-44	2750	18750	125 ⁽⁵⁾
	150 ⁽⁴⁾	LW1510B	Ø320x170	3500	100-277	<8	39-44	2750	18750	125 ⁽⁵⁾
IP20 + IP65 45°	80	LW0805	Ø320x170	2900	100-277	<8	39-44	1750	10000	125
	80	LW0805B	Ø320x170	2900	100-277	<8	39-44	1750	10000	125
	120	LW1205	Ø320x170	2900	100-277	<8	39-44	2500	13800	115
	120	LW1205B	Ø320x170	2900	100-277	<8	39-44	2500	13800	115
HIGH BAYS ACCESSORIES IP65	Type	Code	Dimensions Ax B (mm)	Weight (g)	Description					
	Supporter	SOPLW5	246x150x80	525	Support for IP65 high bays white					
	Supporter	SOPLW5B	246x150x80	525	SSupport for IP65 high bays black					
	Reflector	RLW60B	Ø352x130	410	60 ° IP65 high bay aluminum reflector					
Reflector	RLW6UB	Ø352x130	410	60 ° IP65 high bay aluminum reflector that improves uniformity						

(1) Data ± 5%
(2) Data ± 10%
(3) Data for 2 FA de 60W
(4) Data for 2 FA de 80W
(5) If the consumption reduces to 130w the efficiency increases to 132m/w



Sensors

	Sensor SP16X10A	Sensor SP16X14B	Light controller
Material	Plastic	Plastic	Plastic
Protection grade	IP20	IP20	IP20
Regulation	No	Si	Si
Work temperature	-20...+60	-35...+70	-20...+60



Presence sensor SP16X10A



Presence sensor SP16X14B



Remote controller CS16X14B⁽¹⁾



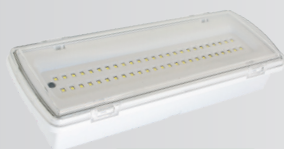
Light controller

	Code	Input voltage (V AC)	Consumption (Standby/normal) (W)	Detection area (%)	Waiting time	Light sensor (lx)	Microwave frequency (GHz)	Microwave power (mW)	Rank of detection (m)	Detection angle	Maximum height (m)	Maximum load (Wind/Wres.)
Presence sensor	SP16X10A	220-240	0,5/1,2	10/25/50/75/100	5s/30s/1/5/15/30min	2/50	5,8	<0,2	Ø16/10	30°-150	10	400/1000
Presence sensor	SP16X14B	120-277	Consumption <1	50/100	0s/10s/1/5/10/30/60min/∞	2/50	5,8	<0,2	Ø16/15	30°-150°	15	400/1000
Controller remote CS16X14B ⁽¹⁾	CS16X14B	-	-	-	-	-	-	-	-	-	-	-
Light controller	CL002	1-10	0,6/1,2	-	-	-	-	-	-	-	-	-

(1) Controller compatible only with SP16X14B sensor

Emergency

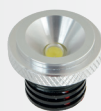
	Emergency lights	Emergency spots	Emergency Kits
Material	PC	PC	PC
Diffuser	Transparent	Transparent	-
Protection grade	IP65	IP20	IP20
Work temperature	-10...+45	-10...+45	-5...+50



Emergency lights



Emergency spot



Mini Spot emergency



Emergency kit KE01C



Emergency kit KE05C

	Code	Input voltage (V AC)	luminous flux (Lm) ⁽²⁾	Power in emergency mode	Potencia máxima no emergencia (W) ⁽¹⁾	Loading time (h)	Time of discharge (min)	Ni-Cd batteries (V/mAh)
Emergency lights	LE73MC	210-250	180	2	7,5	24	180	4,8/1800
Emergency spot	SE53MC	220-240	420	5	-	24	180	4,8/4500
Mini Spot emergency	SE32MC	220-240	160	3	-	24	120	4,8/1800
	Code	Mode of installation	Input voltage (V AC)	Output voltage (DC)	Maximum power (W) ⁽¹⁾	Loading time (h)	Time of discharge (min)	Ni-Cd batteries (V/mAh)
Emergency kit	KE01C	Entrada Driver	90-265	230	25	24	60	12/4400
	KE05C	Salida Driver	100-277	28-50	5	24	>90	12/1200

Emergency UL



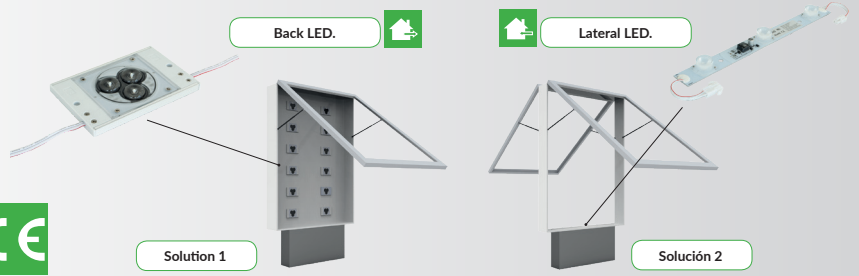
Emergency kit UL

	Code	Mode of installation	Input voltage (V AC)	Output voltage (DC)	Maximum power (W) ⁽¹⁾	Loading time (h)	Time of discharge (min)	Ni-Cd batteries (V/mAh)
90 minutes discharge	KE08UL	Driver Output	100-277	25-48	8	24	90	12/1000



MUPIS Lighting

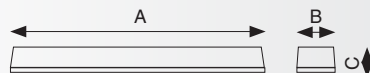
	Back LED	Lateral LED
Material	Plastic / Alu	Plastic / Alu
Protection grade	IP68	IP64
Power Supply	External	External
Work temperature	-25...+60	-25...+60
Power factor	0,95	0,95



		Type	Total consumption (W) ⁽²⁾	Code	Dimensions AxBxC (mm)	Weight (g)	Input voltage (V)	Luminous flux (lm) ⁽²⁾⁽³⁾	Efficiency (lm/W) ⁽²⁾⁽³⁾	Angle to 50% (°)	
Billboard LED	Constant current	Lateral 3 LED	9	M3L0945	295x27,5x15,6	65	24 DC CV	990	110	15x45°	
		Lateral 5 LED	15	M5L1545	495x27,5x15,6	100	24 DC CV	1500	100	15x45°	
		Back 3 LED ⁽⁴⁾	7	M307165	124x82x11	125	12 DC CV	500	71	180°	
	Constant current	Lateral 3 LED	7	M3L0945BM	295x27,5x15,6	65	9 DC CC	990	141	15x45°	
		Lateral 5 LED	12	M5L1545BM	495x27,5x15,6	100	15 DC CC	1500	125	15x45°	
		Back 3 LED ⁽⁴⁾	5,4	M305165CM	124x82x11	125	9 DC CC	500	93	180°	
	Power Supply		30	FAM30	220x29x20			100 - 240			
	Power Supply		60	FAM60	190x50x25			100 - 240			
	Power Supply		100	FAM100	179x68x41			100 - 240			

IP65 Lights for T8 tubes

Protection grade	IP65
Material	Plastic
Diffuser	Translucent



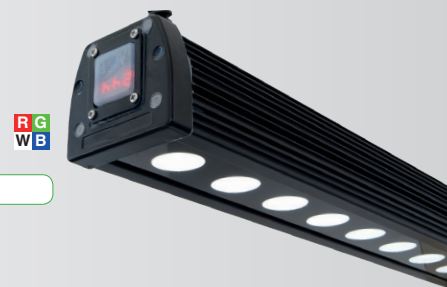
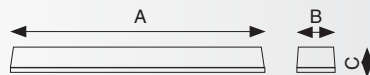
Luminaire IP65 PC Tubes T8



		Type	Code	Dimensions AxBxC (mm)	Weight (g)
IP65 PC Tubos T8	600mm 1 Tube	L1X06CP		660x93x100	750
	1200mm 1 Tube	L1X12CP		1270x93x100	1500
	1500mm 1 Tube	L1X15CP		1565x93x100	1850
	600mm 2 Tubes	L2X06CP		660x140x100	1100
	1200mm 2 Tubes	L2X12CP		1270x140x100	2150
	1500mm 2 Tubes	L2X15CP		1565x140x100	2700

Wall - washers

	RGBW
Material	Aluminum
Protection grade	IP65
Power supply	Internal
Work temperature	-20...+45
Power factor ⁽¹⁾	0,95



RGBW



		Type	Total consumption (W) ⁽²⁾	Code	Dimensions AxBxC (mm)	Weight (g)	Input voltage (V AC)	Luminous flux (lm) ⁽²⁾	Efficiency (lm/W) ⁽²⁾	Angle to 50% (°)
Wall-washers	RGBW		36	WW18230	1000x75x65	4000	100-240	400	65	30°
	RGBW		72	WW18430	1000x75x65			1100	70	

(1) Data ± 5%

(2) Data ± 10%

(3) Data shown correspond to the color 6700K-Freeze.

(4) Recommended 1und/m²



Campos F.C. Oporto Dragon Force
📍 Enguera (Valencia)



Bridgestone
📍 Torija (Guadalajara)

(1) Data ± 5%
(2) Data ± 10%

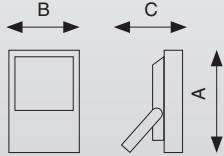


Ideal product for installation in sports facilities, compatible with EXILIS technology.
Different solutions for specific regulation.

	M. standard	M. EXILIS	M. Shoebox	M. STADIUM	Shoebox UL
Material	Alu/Crystal	Alu/Crystal	Alu/Crystal	Alu/Crystal	Aluminum
Protection grade	IP65	IP65	IP65	IP66	IP65
Diffuser	Transparent	Transparent	Lens	Lens	Lens
Power supply	Internal	Internal	Internal	Internal	Internal
Regulation	No	EXILIS	1-10V	1-10V DALI	Sensor
Work temperature	-30...+45	-20...+50	-30...+50	-30...+45	-30...+50
Power Factor ⁽¹⁾	0,95	0,95	0,95	0,95	0,95
CRI	>70	>70	>70	>80	>70

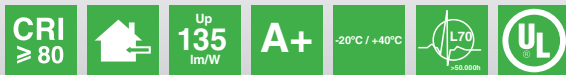
5000K (4800-5300) Cold/Natural

4000K (3800-4300) Neutral/Neuro



	Total consumption (W) ⁽²⁾	Code	Dimensions (mm)	Weight (g)	Input voltage (V AC)	THDi (%)	DC Voltage (V)	DC current (mA)	Luminous flux (lm) ⁽²⁾	Efficiency (lm/W) ⁽²⁾	Angle to 10° / 50%
Magnum standard	30	P0310NF	226x167x50	1130	85-264	<20	27-32	850	3750	125	>150°/110°
	50	P0510NF	265x220x50	2000	85-264	<20	27-32	1500	6250	125	>150°/110°
	100	P1010NF	390x295x60	4085	200-240	<10	130-135	700	12500	125	>150°/110°
Magnum EXILIS	55	P0610NE	359x253x88	3540	200-277	<8	40-45	1150	6600	120	>135°/100°
	120	P1210NE	438x286x101	5800	200-277	<8	42-47	2350	14400	120	>135°/100°
	180	P1810NE	581x402x116	10900	200-277	<8	42-47	3550	21600	120	>135°/100°
Magnum Shoebox	150	P15ASCJ	386x341x77	8500	180-265	<20	39-44	3300	18750	125	160°/70x150°
	150	P15ASCCK	418x321x90	6000	180-265	<20	39-44	3300	18750	125	160°/90x120°
Magnum STADIUM	250	P02530C	265x170x705	10000	220-240	<40	220-230	1000	130	32500	>50° / 15°-27°
	500	P05030C	470x170x705	20000	220-240	<40	220-230	2x1000	130	65000	>50° / 15°-27°
	750	P07530C	670x170x705	30000	220-240	<40	220-230	3x1000	130	97500	>50° / 15°-27°
	1000	P10030C	875x170x705	40000	220-240	<40	220-230	4x1000	130	130000	>50° / 15°-27°
STADIUM Accesories	Viewfinder	PSTV					View				
	Grid	PSTRP					Protection grid IK10				

Projectors with UL certification, Approved for the USA.



	Total consumption (W)	Code	Dimensions (mm)	Weight (g)	Input voltage (V AC)	Adjustable	Luminous flux (lm) ⁽²⁾	Efficiency (lm/W) ⁽²⁾	Angle to 50%	CRI ≥
Wallpack	60	WP6011CUL	360x235x195	3500	100-277	No	6900	115	110°	70
	100	WP10011CUL	418x286x220	6000	100-277	No	11000	110	100°	80
Canopy	55	CP55CCNA	241x241x95	2150	100-277	No	6000	109	150°	80
	100	CP100CBC	380x380x65	6000	100-277	No	11000	110	100°	80
Shoebox	185	SB185CAAMUL	779x340x125	10600	100-277	Yes	25000	135	150°x85°	80
	240	SB240CAAMUL	779x340x125	10900	100-277	Yes	31200	130	150°x85°	80
	300	SB300CAAMUL	779x340x125	11300	100-277	Yes	39000	130	150°x85°	80



Street lighting
📍 Mairena del Alcor (Sevilla)



Street lighting
📍 Catarroja (Valencia)

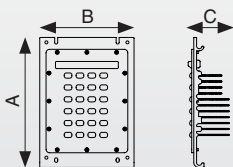
Exterior. lighting.

Modules and decorated street lights.



Universal and smart lighting with the highest efficiency in the market and point to point remote control with PLC integrated in the driver. Meet the standards and increases the savings up to 85% in regards to the conventional technology.

	PRAGMA XPG3	PRAGMA 3030
Material	Aluminum	Aluminum
Protection Grade	IP66 / IK08	IP65 / IK08
Lenses	150x60°	140x68°
Work temperature	-40...+50	-40...+50
Power factor ⁽¹⁾	0,95	0,95
CCT	4000K	3000 / 4000K



Module AIRIS PRAGMA XPG3



Module AIRIS 3030



Installation plate (0°-30° inclination) RTCPIBRI



Installation plate (0°-30° inclination) VTCPID



SIGNUM URBAN FASIGA



SIGNUM PESCADOR FAPES02



SIGNUM FERNANDINA FAFER01



SIGNUM VILLA FAVILC



SIGNUM URBAN 2 FASIG02



SIGNUM NEO FANEO



	Type	Maximum consumption (W) ⁽²⁾	Dimensions AxB (mm)	Weight (g)	Input voltage (V)	DC Voltage (V)	Current entry (mA)	Luminous flux (lm) ⁽²⁾	Efficiency (lm/W) ⁽²⁾
Module LED	24 LED XPG3	58	182x135x58	750	100-277	32-37	750	7000	121
	63 LED 3030	60	135x135x45	690	100-277	40-45	140	7500	125
SIGNUM VILLA ⁽³⁾	24 LED XPG3	58	440x440x770	6860	100-277	32-37	750	5670	98
	63 LED 3030	60	440x440x770	6800	100-277	40-45	140	6060	101
SIGNUM FERNANDINA ⁽³⁾	24 LED XPG3	58	Ø520x860	7260	100-277	32-37	750	5510	95
	63 LED 3030	60	Ø520x860	7200	100-277	40-45	140	5880	98
SIGNUM URBAN ⁽³⁾	24 LED XPG3	58	Ø485x170	5860	100-277	32-37	750	6670	115
	63 LED 3030	60	Ø485x170	5800	100-277	40-45	140	7140	119
SIGNUM URBAN 2 ⁽³⁾	24 LED XPG3	58	Ø485x695	7360	100-277	32-37	750	6610	114
	63 LED 3030	60	Ø485x695	7300	100-277	40-45	140	7080	118
SIGNUM PESCADOR ⁽³⁾	24 LED XPG3	58	Ø585x330	5860	100-277	32-37	750	6670	115
	63 LED 3030	60	Ø585x330	5800	100-277	40-45	140	7140	119
SIGNUM NEO ⁽³⁾	24 LED XPG3	58	Ø450x600	4060	100-277	32-37	750	5915	102
	63 LED 3030	60	Ø450x600	4000	100-277	40-45	140	6300	105
Accessories	VTCPID	Adjustable installation plate (0-30 °) for Villa type luminaires							
	RTCPIBRI	Adjustable installation plate (0-30 °) for Fernandina luminaires							
	SPDV22	Surge protector 10KV / 5KA							
Sensor	Motion sensor and vehicle light measurement								

Using the KITCE adapter (see page 5) you can have modules with variable color from 2200K to 5800K.

(1) Data ± 5%

(2) Data ± 10%. The consumption includes the consumption of the F.A.

(3) These models include surge protector (SPDV22) and adapter plate. Check other colors



Street lighting
📍 Marinera de Alcor (Sevilla)



Street lighting
📍 Alovera (Guadalajara)



Universal and smart lighting with the highest efficiency in the market and point to point remote control with a PLC integrated driver.

Complies with regulation & standards and increases savings up to 85%.

	TITANIUM	GEA
Material	Aluminum	Aluminum
Protection Grade	IP67 / IK09	IP66 / IK09
Lenses	140x85° / 150°	150x85°
Power supply	Internal	Internal
Work temperature	-30.....+50	-30.....+40
Power factor ⁽¹⁾	0,96	0,96
CCT	3000/4000K	3000/4000K



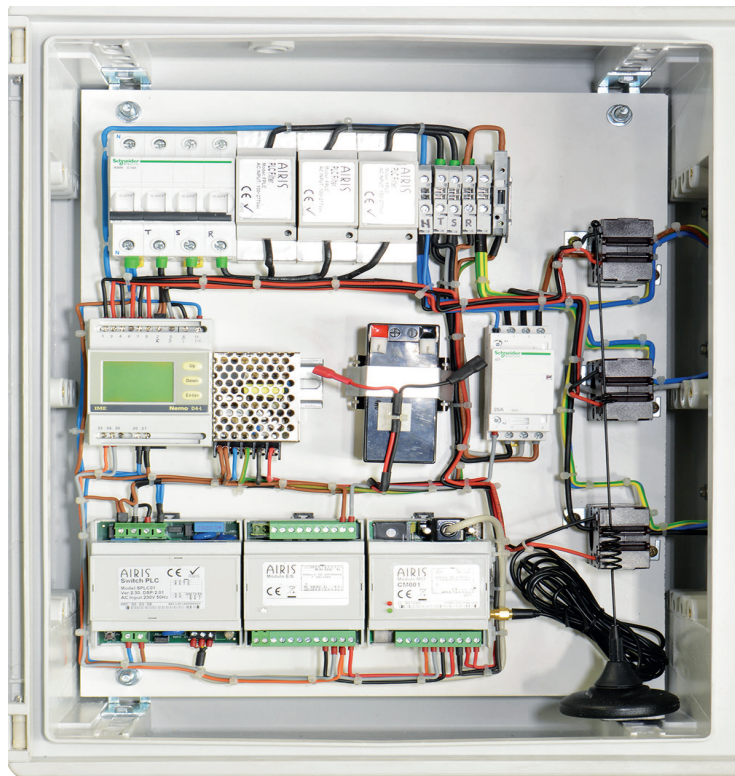
	Type	Maximum consumption. (W) ⁽²⁾	Dimensions AxBxC (mm)	Weight (g)	Input voltage (V AC)	DC Voltage (V)	LED current (mA)	Luminous flux (lm) ⁽²⁾	Efficiency (lm/W) ⁽²⁾	Lens
GEA⁽³⁾	30 LED XPG3	70	513x150x152	5000	100-277	40-45	700	8200	117	145°x68°
TITANIUM 1	24 LED XPG3	70	385x160x91	4300	100-277	32-37	900	8000	114	140°x85°
	63 LED 3030	60	385x160x91	4275	100-277	40-45	140	7800	130	145°x68°
TITANIUM 2	48 LED XPG3	130	482x180x91	5700	100-277	32-37	825	15600	120	140°x85°
	2 x 63 LED 3030	120	488x180x91	5675	100-277	40-45	140	15600	130	145°x68°
TITANIUM 3	72 LED XPG3	180	636x180x91	7200	100-277	32-37	775	21000	117	140°x85°
	3 x 63 LED 3030	170	636x180x91	7175	100-277	40-45	140	22100	130	145°x68°
KNEECAP	FTROT	-	240x91x84	-	-	-	-	-	-	-
	FTROTB	-	325xØ70/Ø60	-	-	-	-	-	-	-

Using the KITCCE adapter(see page 5)you can lay out the lights with variable color of 2200K until 5800K. For the CEA lights is available a waterproof case to the installation of the motion and light sensors.

(1) Data ± 5%

(2) Data ± 10%. The consumption includes the consumption of the F.A.

(3) Made of LM6 aluminum with special treatment to increase its durability in saline environments
Check other colors



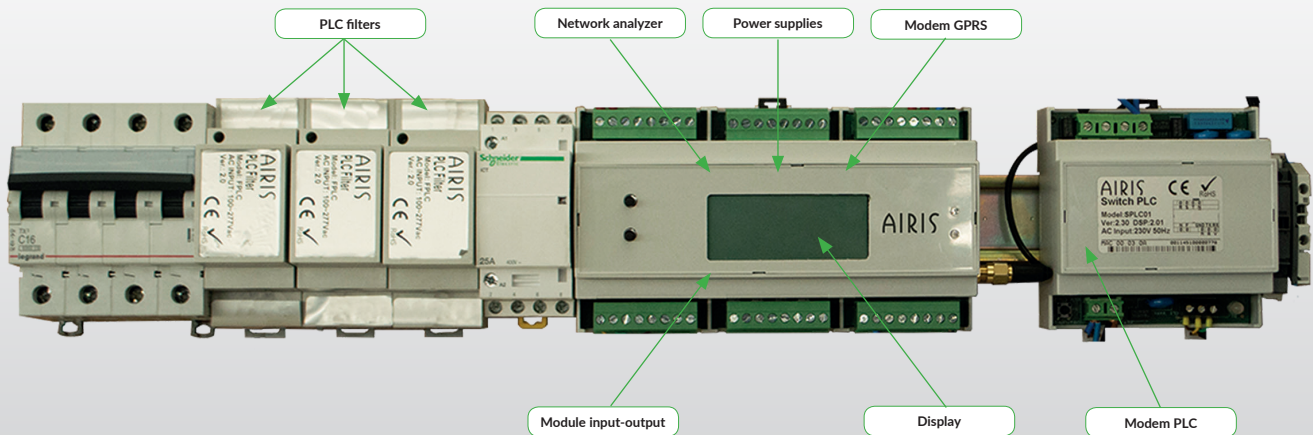
Control panel installation



Sensorization of the street lighting
📍 Andoain (Guipúzcoa)

(1) Data \pm 5%. (IT'S OKAY)
(2) Data \pm 10%. Consumption in the MR16 models does not include ballast consumption.
(3) The data shown corresponds to the color 4000K - Neutral N. To obtain color data 3000K subtract 4%.

Take advantage of the point to point remote control with the new control panel. Improve the PLC communication to control and know the state of each light in real time.



Network analyzer	Dimensions (mm)	Weight (g)	Input voltage (V)	Frequency (Hz)	Feeding (V AC)
	70x58x88	250	Trifásica 50-450V / Monofásica 30-260V	50Hz (47-63Hz)	115-230
	Measures tensions, consumption and frequency of the electric line, admits monophasics and triphasic networks. <ul style="list-style-type: none"> • LCD Screen • RS485 (MODBUS) • Monophasic and triphasic network support (3 and 4 cables) • Current probes of 40/5A (optional: 80/5A, 120/5A, 150/5A, 200/5A and 300/5A) 				
	<ul style="list-style-type: none"> • Electric measurements features: <ol style="list-style-type: none"> a) Phase to phase and neutral phase tensions b) Instant current, average and maximum (Active, reactive, apparent). c) Instant power, average and maximum (Active, reactive, apparent), total and by phases. d) Active and reactive energy e) Frequency, PF, THD 				
Repeater PLC modem	Dimensions (mm)	Weight (g)	Work temperature (°C)	Protection Grade	Feeding (V AC)
	88x58x90	350	0 - 50°C	IP20	230 VAC 50Hz
	In charge of the communication of the lights. Can play the function of the power repeater in the half of the laying if is needed. <ul style="list-style-type: none"> • Wrap material: Polycarbonate • Type of envelope: Rail DIN • Consumption between neutral and phase 0.5W • Communication system: PLC carrier to three phases and neutral with monophasic possibilities. 				
	<ul style="list-style-type: none"> • Reset button. • Protection against overvoltage (surge voltage) • RS232 port for control according to the proprietary protocol for configuration and communication 				
Module Input - Output	Dimensions (mm)		Weight (g)		
	70x58x88		100		
	With 5 relays without voltage for the activation of contactors and power elements that control the current flow of the electric receivers and 5 alarm inputs that serve to send the desired alarms. <ul style="list-style-type: none"> • 5 outputs for relays: <ol style="list-style-type: none"> a) 1 main with NC and NA modes (6A max) b) 1 NA savings (5A max) c) 3 secondary NA (5A max) • 5 voltage-free digital inputs (opto-coupled) 				
GPRS Modem	Dimensions (mm)	Weight (g)	Input voltage (V)	4 Bands GSM	Battery
	70x58x88	150	100-240V AC 50/60Hz	850/900/1800/1900 Mhz	Up to optional 1A
	Intelligent datalogger, sending alarms, receiving direct activation / deactivation orders, astronomical clock configurable through Modem GPRS from the Telemangement platform. <ul style="list-style-type: none"> • GPRS multi-slot class 12 • 1-RS232 y 1-RS485 • 7 dbi antenna • Daily WDT that guarantees availability • In Point-to-Point mode supports up to 512 luminaires and 32 groups 				
PLC filter	Dimensions (mm)		Maximum current		
	90x35x70 (2 DIN rail elements)		Check label		
	PLC filter to isolate external electrical noise, improve the characteristics of the line for PLC communication and isolate information between nearby boxes. <ul style="list-style-type: none"> • Connection: In series with each phase R, S and T in case of three-phase system • Position in the connection diagram: AFTER the protection elements and BEFORE luminaires and PLC switch 				



SPAIN

www.airisled.es
comercial@airissoluciones.es
Phone: +34 902 636 800

BRAZIL

comercial.led@airis.com.br
Phone: +55 31 3517 6190

CHILE

comercial@airisled.cl
Phone: + 56 64 223 4846

COLOMBIA

comercial@airisled.com.co
Phone: +57 2 3797637

COSTA RICA

comercial@airisled.cr
Phone: +506 2228 2514

ECUADOR

administracion@airisled.ec
Phone: +593 2 322 2075

UNITED ARAB EMIRATES

info@airisled.ae
Phone: +00 971 43 215 227

UNITED STATES

info@airisled.us
Phone: + 1 786 530 2258

FRANCE

www.airisled.fr
jean-charles@airisled.fr
michael@airisled.fr
Phone: +33 04 4296 0666

GUATEMALA

comercial@airisled.gt
Phone: +502 2494 8888

ITALY

commerciale@airisled.it
Phone: +39 3337 555 882

MEXICO

contacto@airisled.mx
Phone: +52 55 5202 6048

PANAMA

info@airisled.com.pa
Phone: +507 282-7345

PERU

www.airisperu.com
comercial@airisperu.com
Phone +511 241 35 70

PORTUGAL

comercial@airisled.pt
Phone: +351 243 350 980

UNITED KINGDOM

info@airisuk.com
Phone: +44 (0) 1253 283050

DOMINICAN REPUBLIC

comercial@airisled.do
Phone: +1 829 659 1088

